



Innovation aus Tradition

since 1949

Dreve Otoplastik Product Catalog No.25

Guarantee

When manufacturing our products, our staff uses selected materials fulfilling the highest technical requirements. Most careful processing guarantees, in addition to our years of experience, an excellent quality level.

Service

A full range of additional services belongs to our performance. Professionally educated audiologists are at your disposal on our hotline to answer your questions about our products.

Quality

The quality standard of Dreve products, of course, follows the current level of science. In addition, our focus is on safety for users and patients through biocompatible products. Dreve Otoplastik GmbH is certified in accordance with DIN EN ISO 9001, DIN EN ISO 13485 and Regulation (EU) 2017/745 (MDR). The certificate covers all medical products subject to mandatory monitoring and proves the high quality standard of Dreve products.

Red logo, green ideas

It goes without saying that Dreve quality products and services naturally take into account the issue of sustainability. It continuously influences the optimization and development of our technologies, processes, packaging and innovations.

Dreve Otoplastik GmbH
Max-Planck-Straße 31
59423 Unna/Germany

Phone +49 2303 8807-0
Email otoplastik@dreve.de
Internet www.dreve.com

Design & product photos

Dreve ProDiMed GmbH
Advertising department
Morgenstraße 62c
59423 Unna/Germany



dreve.de/en/sustainability

75 years of innovation: tradition meets future.

Our history

After the Second World War, my parents, Wolfgang and Inge Dreve, established their dental laboratory in the centre of Unna. My father invented and distributed successfully the first products, thanks to his creative mindset. We were also among the pioneers to manufacture individual acrylic earmolds, which were produced in Unna in 1955 for the first time. Our silicone-based ear impression materials developed by ourselves, were key for advancing the field of audiology and gained international recognition in the acoustic branch. Later, in order to facilitate the application in the industry, we introduced the innovative double piston impression syringes as well as the popular double cartridges for 1:1 silicones.

We are proud to have played a role in the development of light-curing resins, which are used in a number of applications, including the manufacturing of shells for in-the-ear hearing aids. In addition, we manufacture light-curing devices and a comprehensive range of laboratory equipment in Unna. The utilization of 3D printing technology has been a core aspect of Dreve's operations since 2003, as the company is among the market leaders today.

With more than 400 employees at our sites in Unna (GER) and Minneapolis (USA), we are well-prepared for future growth. Our product range, which includes silicones, resins, and laboratory equipment, is manufactured in Unna. We are the market leader in Europe for many of our products. Our in-house earmold laboratory, which has been modernized extensively during the Corona period, is one of the largest independent laboratories of its kind in the world.

My wife Gabi and me are the second generation to run the business. We are pleased to have already integrated the third generation of the family with our daughter Victoria Dreve, which paves the future of our MDR-certified family business.

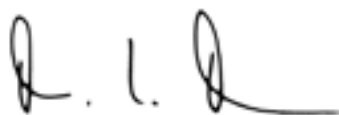
Our motto: "**Innovation aus Tradition**".

Our vision

Despite ups and downs, our company has been successfully evolving under the guidance of the family. In current times of digitalization and artificial intelligence, which have also influenced our production and products, it is of highest importance for us to maintain a personal and trustworthy relationship with our customers. We are consistently available to address any concerns or queries you may have, and we encourage you to contact us anytime.



Yours sincerely



Dr. Volker Dreve

Innovative products

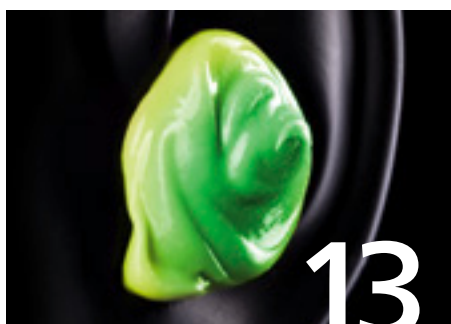


Hygiene

Cleaning, gentle on material, caring

The antimicrobial care series OtoVita® has been around for over ten years. The innovative and valuable properties of the various care products have been retained for years. OtoVita® stands for optimal and sustainable care – obtaining high-quality hearing aid systems.

Our OtoVita® Professional products are specially designed for use in laboratories and support the daily work.

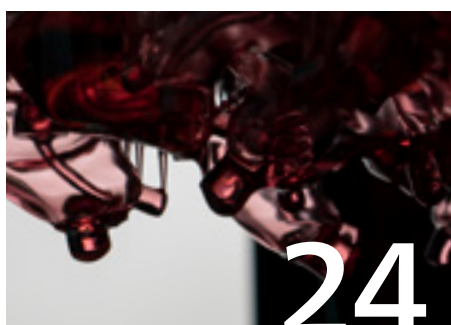


Ear impression & Direct fitting

Pure formality

We offer a complete range of high-quality ear impression materials. With Otoform® you achieve a precise and detailed reproduction of the ear. Our Otoform® products are manufactured exclusively from approved silicone polymers under ISO 9001 and ISO 13485 conditions and are tested for biocompatibility.

Like the Otoform® impression materials, our products for direct fitting of BTE, water protection and hearing protection earmolds promise a short curing time and are easy to use.



Digital manufacturing

More than 3D printing

Automated manufacturing by means of 3D printing has long been the state of the art in hearing acoustics. As the first earmold laboratory, Dreve has been involved from the beginning and had a decisive influence on today's manufacturing processes.

Our continuous research and development constantly sets new standards. You can rely on our high-quality materials and validated processes for the digital manufacturing of hearing aid earmolds and shells.



Handcrafted manufacturing

Traditionally manual

Our specially matching working materials and the large selection of Biopor® AB silicones, Fotoplast® acrylates and lacquers facilitate the daily working process in the production of individual and precisely fitting earmolds in the manual process. Our biocompatible materials are characterized by easy processing and fast polymerization.



Extras & Accessories

It may be quiet a little more

Each earmold is unique as a fingerprint and a small piece of art: So very often it is the tiny little things that count and determine the final quality of the product. That is why we dedicate ourselves also to the little things like accessory products – from drills to Mixing tips. We set high quality standards, always aiming to provide you with the best product.

Application tips from our experts



OtoVita®

Cleaning, gentle on material, caring

The antimicrobial care series OtoVita® has been around for over ten years. The innovative and valuable properties of the various care products have been retained for years. OtoVita® stands for optimal and sustainable care – obtaining high-quality hearing aid systems.

Our OtoVita® Professional products are specially designed for use in laboratories and support the daily work.

OtoVita® Mini Care Set

For BTE hearing systems for external care and disinfection of earmolds.

- 1 Small cleaning bowl
- 7 Antimicrobial cleaning tablets (weekly demand)
- 1 Air blower

1 set

0471



OtoVita® Care Set BTE

For external disinfection and drying of hearing systems and earmolds. The antimicrobial OtoVita® Cleaning Tablets provide advanced protection from bacteria and fungi, reducing the risk of ear infections and inflammations. For regular maintenance, recommend to your customers the practical month's supply of cleaning tablets and drying pellets.

- 1 Cleaning bowl
- 7 Antimicrobial cleaning tablets (weekly demand)
- 1 Drying tub
- 2 Drying pellets
- 1 Air blower

1 set

0721

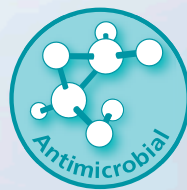




Gentle and skin-friendly



Freshness through lemon scent



Antimicrobial formula

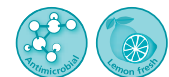


Bitter taste protects children

OtoVita® Care Set ITE

For external disinfection and drying of hearing systems and earmolds.

- 1 Cleaning spray with vaporiser (30 ml)
- 1 Drying tub
- 2 Drying pellets
- 1 Brush with magnet



1 set 0703



Easy cleaning and drying with OtoVita® care products



Hygiene OtoVita®

OtoVita® Cleaning Tablets

For BTE hearing systems for external care and disinfection of earmolds. Also ideal for disinfection of hearing or splash water protection.

4 x 7 pieces	0521
--------------	------



OtoVita® Cleaning Spray

For external care and disinfection of hearing systems and earmolds.

50 ml	0951
100 ml	0955



OtoVita® Cleaning Tissues

For external care and disinfection of hearing systems and earmolds. The wet tissues do not contain alcohol. Also ideal for disinfection of hearing protection or splash water protection.

30 pieces, in a dispenser, tear-off	0681
30 pieces, single packed	0683



Please note the contact time

OtoVita® Tubing Floss for micro tubing

30 pieces	0684
-----------	------



OtoVita® Tubing Floss

30 pieces	0685
-----------	------



OtoVita® Cleaning Bowl

1 piece	0541
---------	------



OtoVita® Drying Tub

1 piece	0641
---------	------



OtoVita® Drying Pellets

6 pieces	07011
----------	-------



OtoVita® Air Blower

Cerumen residues and remaining liquids are removed from the sound canal and tube easily and thoroughly.

1 piece	0572
---------	------



OtoVita® Care Case

Handy care case to store OtoVita® care products securely. Own branding possible from order quantities > 50 pcs.

- Dimensions: H 75 x W 165 x D 110 mm
- Color: Blue with white branding
- Material: Nylon

1 piece	46612
---------	-------



Otoferm® Creme

Increases the wearing comfort and serves for better settling-in period and additional sealing of the earmold. New improved formulation with aloe Vera, pleasant fragrance with a hint of chamomile.

5 ml	Tube	056
	Dispenser	0565



Brush with magnet

For cleaning earmolds. The magnet facilitates removing the battery from the hearing system.

25 pieces	067
-----------	-----

Wax loop

For removal of cerumen from earmolds or hearing systems.

25 pieces	063
-----------	-----



Wire cleaning brush

For cleaning earmolds.

50 pieces	073
-----------	-----

Cleaning brush

With magnet and wax loop.

1 pieces	071
----------	-----



Hygiene OtoVita®

OtoVita® dry uv 2.1

OtoVita® dry uv 2.1 offers optimum care. The gentle and energy-saving drying prolongs the life of hearing systems.

- Perfect drying by convective flow
- Hygienic cleansing by UV-C light
- Easy handling with sensor button
- Automatic turn off

OtoVita® dry uv 2.1

0665

dry-cap uv 3.1®

Rechargeable dry box for all hearing aids. Hearing aid charging stations of any size can be accommodated under the cap.

- UV-C light for hygienic cleaning
- Rechargeable through USB standard
- 2 modes: Clean mode – an efficient short-term hygiene program or Dry&Clean mode – combines fast drying with UV-C light
- Fast drying due to efficient air blower

dry-cap uv 3.1®

0676

u-sonic 3

Rechargeable mini ultrasonic cleaning. 4 short cleanings or 8 intensive cleanings by touching the sensor button. Thanks to innovative LiPo battery technology, you are mobile, a powerful 42 kHz ultrasonic vibration ensures hygienic cleanliness even with clear water.

- 42 kHz frequency at 20 watts
- Rechargeable by LiPo battery, Mobility by USB-C standard
- Easy handling by just one button
- 125 ml stainless steel tub

u-sonic 3

06771

vac-clean UV 2®

Rechargeable mini vacuum cleaner suitable for all hearing systems. Powerful for cleaning hearing systems thanks to the combination of vacuum suction force with sonic vibrations of the attachment heads.

- Effective suction by vacuum pump, sonic brush for perfect cleansing
- 3 performance suction levels by touching one button
- UV light with antimicrobial effect
- Rechargeable by using integrated LiPo battery via USB-C

vac-clean UV 2®

06781



0665



0676



06771



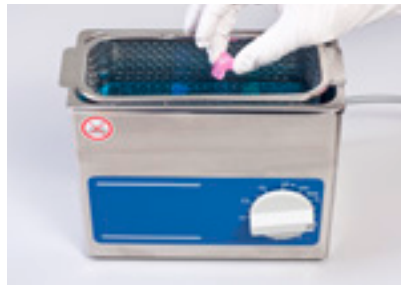
06781

Technical data

Device	Voltage	Weight	Device dimensions (H x W x D)
OtoVita® dry uv 2.1	100–240 V, AC 50/60 Hz	~168 g	35x90x110 mm
dry-cap uv 3.1®	100–240 V, AC 50/60 Hz	~217 g	96x82x144 mm
u-sonic 3	100–240 V, AC 50/60 Hz	450 g	78x100x100 mm
vac-clean uv 2®	100–240 V, AC 50/60 Hz	140 g	33x47x130 mm

Hygiene OtoVita® Professional

Disinfecting, cleaning, gentle on materials



Hygiene

Application of OtoVita® Professional at the workplace.

OtoVita® Professional Hand Gel

For hygienic hand washing according to DIN 1499 without water. The hand gel is characterized by a smooth consistency, short contact time and a neutral odor. It is not only bactericidal, but also effective against enveloped viruses.

1 l 8277



OtoVita® Professional Disinfection Concentrate

For the disinfection of earmolds and instruments in the ultrasonic cleaning unit. We recommend to change the ultrasonic bath daily to assure an ideal disinfection. The OtoVita Professional disinfection concentrate is effective against bacteria, fungi and enveloped viruses.

1 l 8270



Use biocidal products with care. Always read the label and product information before use.

OtoVita® Professional Disinfection Spray

For disinfecting ear impressions and work surfaces to ensure a hygienic workplace. The OtoVita Professional disinfection spray is effective against bacteria, fungi and enveloped viruses (e.g. SARS-CoV-2).

750 ml 8272



- ⊕ For rapid disinfection during daily work
- ⊕ Comprehensive protection against most common bacteria and fungi
- ⊕ Also effective against enveloped viruses
- ⊕ Prevents drying of the hands
- ⊕ Maintains the natural smoothness of the skin



Hygiene Devices

Ultrasonic cleaning unit

Low-priced ultrasonic unit with stainless steel tank and plastic insert basket for occasional use. The integrated timer is infinitely variable up to seven minutes continuous operation.

Ultrasonic cleaning unit	823
--------------------------	-----

Bandelin

High quality ultrasonic cleaning equipment for everyday use. The robust, compact and easy to operate devices are equipped with a timer for setting to the minute or continuous operation.

Bandelin RK 31	821
Bandelin RK 100 H with heating function	82100



82100

Technical data

Device	Voltage	HF power	Frequency	Filling volume	Interior dimensions (HxWxD)
Ultrasonic cleaning unit	230 V / 50 Hz	50 watts	42 kHz	0.6 l	55 x 155 x 95 mm
Bandelin RK 31	230 V / 50 Hz	160 watts	35 kHz	0.6 l	60 x 190 x 85 mm
Bandelin RK 100 H	230 V / 50 Hz	320 watts	35 kHz	2.0 l	100 x 240 x 140 mm

Lid made of stainless steel

1 piece	for RK 31	8212
---------	-----------	------

Insert basket made of stainless steel

Dimensions:

RK 31: H 52 x W 175 x D 70 mm

RK 100 H: H 40 x W 200 x D 110 mm

1 piece	for RK 31	8211
1 piece	for RK 100 H	82103

Lid with hole made of stainless steel

For 2 beaker.

1 piece	for RK 31	8213
1 piece	for RK 100 H	82101

Beaker

1 piece	for RK 31	600 ml, Ø 76 mm	8214
1 piece	for RK 100 H	600 ml, Ø 85 mm	82102

Insert basket made of plastic

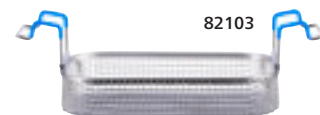
Ø 75 mm, suitable for one beaker, ideal for earmolds and small items.

1 piece	for RK 31	830
---------	-----------	-----

8212



8211



82103

8213



8214

82101



82102

830



Ear impression & Direct fitting

Pure formality

We offer a complete range of high-quality ear impression materials.

With Otoform® you achieve a precise and detailed reproduction of the ear. Our Otoform® products are manufactured exclusively from approved silicone polymers under ISO 9001 and ISO 13485 conditions and are tested for biocompatibility.

Like the Otoform® impression materials, our products for direct fitting of BTE, water protection and hearing protection earmolds promise a short curing time and are easy to use.



BOOST
YOUR
IMPRESSION

Ear impression & Direct fitting Otoform®

Otoform® Xpand

The addition-vulcanizing Otoform® Xpand expands gently in the ear during impression taking. The impression material is advantageous for soft ear tissue, as it extends proportionally in the ear. In addition, it is also favorable for the fitting of hearing protection and power hearing aid systems. Otoform® Xpand guarantees a high sealing of earmolds. It is pressure building like a putty material, but allows a simple ear impression taking without much effort thanks to the creamy-fluffy consistency and excellent flowability.

8 x 50 ml	Double cartridge	2966
-----------	------------------	------



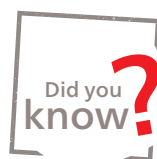
Impression taking with Otoform® Xpand in the Injector control A

Otoform® A softX

Addition-vulcanizing ear impression silicone with a pasty consistency. Otoform® A softX is particularly suitable for deep ear impressions. It can be injected deeply into the auditory canal without much effort. Despite its good flowability, it is absolutely thixotropic and only flows out of the cartridge when it is pumped.

Now also available with color indicator: The material shows by a color change from violet to pink that it is cured.

8 x 50 ml	Double cartridge	2956
8 x 50 ml	Double cartridge with color indicator	8801



Otoform® A soft X
Due to its special properties it is excellently suited for children and deep impressions.

Otoform® A softX boost

Optimized ear impression taking material with a shortened setting time of 90 seconds. The material shows by a color change from green to neon yellow that it is cured. It is addition-curing in a paste-like consistency. Easy and deep impression taking possible beyond the second bend due to excellent flowability. Absolutely thixotropic material which only flows when dispensed out of the cartridge. Otoform® A softX boost is particularly suitable for deep ear impressions, sensitive ear tissue and kids' ears.

8 x 50 ml	Double cartridge with color indicator	8802
-----------	---------------------------------------	------



Ear impression & Direct fitting Otoform®



Otoform® Ak

The first non-sticky, kneadable ear impression silicone for the slightly pressure-forming impression technique in double cartridges. For fast, secure and hygienic impression taking.

Otoform® A soft

The impression material has a pasty consistency, but is at the same time absolutely thixotrope-stable. Consequently, it does not flow out of the ear. After curing, the impression can be easily removed from the ear and has a high tensile strength. We recommend Otoform® A soft for the pressure-free impression taking and for CIC hearing systems.

Otoform® A flex

Impression material with a pasty consistency that is also absolutely thixotropic and does not flow out of the ear. The soft-flexible final hardness makes it particularly comfortable to remove the impression from the ear. Particularly recommended for CIC impressions, very narrow auditory canals (e.g. children) or for people who are sensitive to pain.

8 x 50 ml Double cartridge 4545

8 x 50 ml Double cartridge 3206

8 x 50 ml Double cartridge 2936

Overview Otoform® Double cartridge

Product	Features	Impression technique	Final hardness	Application
Otoform® Xpand	Expanding, soft, easy handling and processing	pressure-forming	20 ± 2 Shore A	Hearing protection, Power and standard BTE, ITE, soft ear tissue
Otoform® A softX	Soft, easy processing, optimal fluidity	without pressure	25 ± 2 Shore A	ITE, CIC, IIC, sensitive ear tissue
Otoform® A softX with color indicator	Soft, easy processing, optimal fluidity	without pressure	25 ± 2 Shore A	ITE, CIC, IIC, sensitive ear tissue
Otoform® A softX boost with color indicator	Soft, easy processing, optimal fluidity	without pressure	25 ± 2 Shore A	ITE, CIC, IIC, sensitive ear tissue
Otoform® Ak	Classic	pressure-forming	35 ± 2 Shore A	Hearing protection, Power and standard BTE, ITE
Otoform® A soft	Soft, easy processing	without pressure	40 ± 2 Shore A	ITE, CIC
Otoform® A flex	Soft, flexible, easy processing	without pressure	25 ± 2 Shore A	ITE, CIC

Ear impression & Direct fitting Otoform®

Otoform® Ak X





The pink impression material is a soft, smooth-running and non-sticky mousse. It is tangibly elastic, comfortable to process as well as easy to fit. Due to its flowability it is perfect for deep ear impressions (CIC).

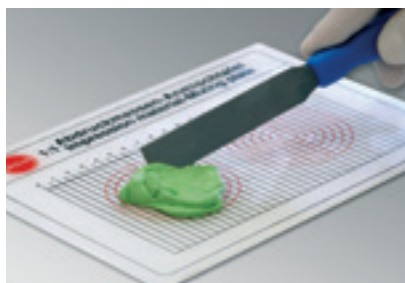
2 x 250 ml	Tubs (A+B), incl. dosing spoons		470
2 x 500 ml	Tubs (A+B), incl. dosing spoons		475



Otoform® Ak

Proven kneadable impression material, non-sticky and smooth with a slightly pressure-forming consistency. An even and controlled pressure is applied on the ear tissue. Otoform® Ak is advantageous for earmold fitting and sealing for less resilient ear tissue.



2 x 272 ml	Tubs (A+B), incl. dosing spoons		464
2 x 544 ml	Tubs (A+B), incl. dosing spoons		452
2 x 3.4 l	Buckets A+B		456
2 x 10.2 l	Buckets A+B		457



Preparation of an ear impression with Otoform® Ak

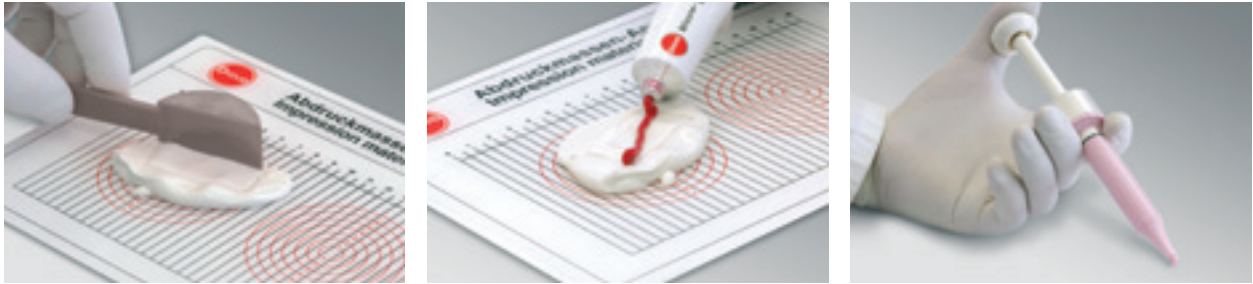
Otoform® Singles

The portion package is ideal for two ear impressions. Especially for home visits it is a hygienic, practical and quick option.

2 x 10 ml	Singles (A+B), Otoform® Ak X		45430
	Singles (A+B), Otoform® Ak		45420



Ear impression & Direct fitting Otoform®



Preparation of an ear impression with Otoform® Kc

Otoform® Kc

A kneadable, smooth and non-sticky impression material, with a light pressure forming consistency. Even and stable pressure is applied on less resilient ear tissue and so influences the fitting and sealing of the earmolds positively.

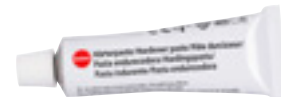
124 ml	Tub + 5 ml hardener paste	500
584 ml	Tub + 20 ml hardener paste incl. measuring spoon	502
13.1 l	Bucket	504



Hardener paste

The hardener paste for the impression material Otoform® Kc is also available separately.

5 ml	Tube	52112
20 ml	Tube	52212






Overview Otoform® Putty

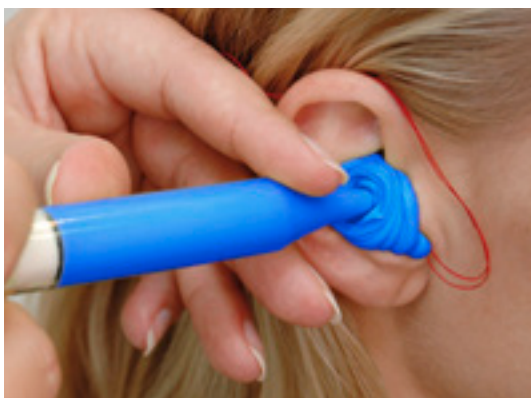
Product	Features	Impression technique	Final hardness	Application
Otoform® Ak X	Soft mixing feeling	pressure-forming	30 ± 2 Shore A	BTE, ITE, CIC, IIC, sensitive ear tissue
Otoform® Ak	Classic	pressure-forming	35 ± 2 Shore A	Hearing protection, Power and standard BTE, ITE
Otoform® Kc	Condensation-vulcanising	pressure-forming	30 ± 2 Shore A	BTE, ITE, CIC

Ear impression & Direct fitting Otoferm® Protect & Otopren

Otoferm® Protect

Ideal for the direct fitting of BTE and splash water protection earmolds. Manufactured earmolds from Otoferm® Protect are floatable. Similar to an impression material, Otoferm® Protect has a short curing time and is easy to process.




2 x 100 ml	Tubs (A+B), opaque		17401
	Tubs (A+B), opaque		17402
	Tubs (A+B), opaque		17403



Direct fitting with Otoferm® Protect

Otoferm® Protect with swim box

In a practical 2 x 10 ml portion pack with waterproof floating box. The floating box offers space for two earmolds. For direct fitting on site.


2 x 10 ml	Singles (A+B), opaque		13915
	Singles (A+B), opaque		13916
	Singles (A+B), opaque		13917



Otopren

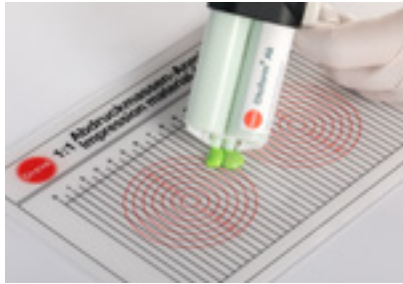
High-quality silicone, addition-vulcanizing and 1:1 mixable. The consistency is smooth for a clean and precise processing in the double cartridge. We recommend to seal the surface of the earmolds with soft silicone lacquers.

- Final hardness: 55 Shore A

8 x 50 ml	Double cartridge, reddish transparent		17501
-----------	---------------------------------------	---	-------



Ear impression & Direct fitting Accessories



Application of an injector with double cartridge

Manual Injectors

The manual Injectors enable a clean and safe application of impression materials with stable pressure. Less effort is necessary for dispensing the material.

Injector DS 50 for 50 ml double cartridges	1502
Injector for 48 ml and 50 ml double cartridges	15022



Spacer

To reduce the grip distance, for easier dispensing of impression material. For Injector and Injector DS 50.

1 piece	1507
---------	------



Ear impression & Direct fitting Accessories

Injector control A

The Injector control A is extremely comfortable and increases the freedom of movement during impression taking. Suitable for all Otoform® impression materials.

220–230 V / 50–60 Hz	15151
115 V / 60 Hz, US plug	15151A



Simple loading of the double cartridge

- ⊕ Automatic dosage and mixing of impression material
- ⊕ Even and adjustable pressure on the ear tissue, thus a fitting of the earmold resp. ITE system is controlled in a better way
- ⊕ Reduces shaking and moving thanks to the electromotive drive
- ⊕ Continuously variable speed (0.35–3.5 r/min)
- ⊕ Quick exchange of cartridges
- ⊕ For all 48 ml and S 50 double cartridges
- ⊕ Integrated rechargeable battery with overload protection

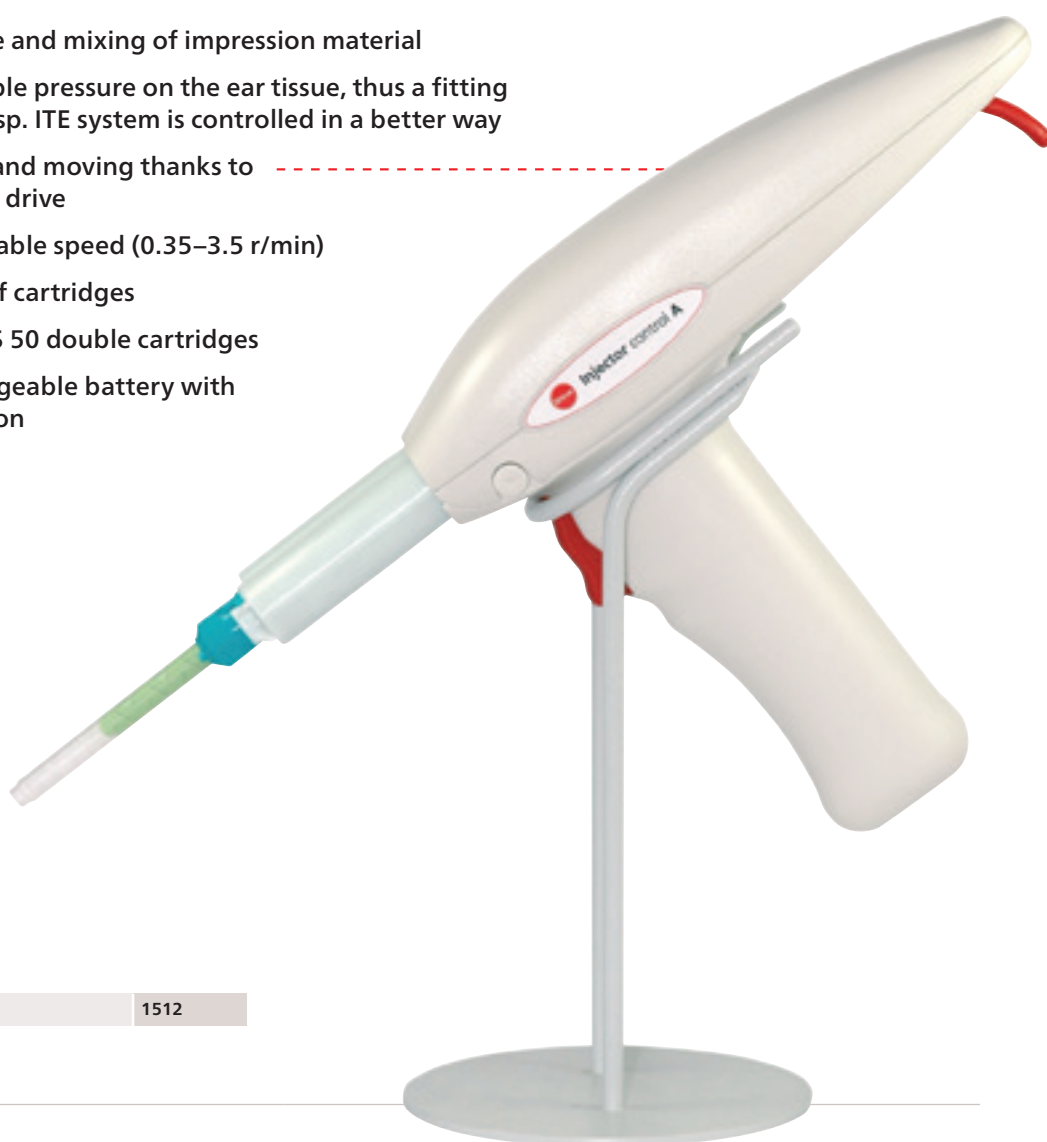


Table rack

For Injector control A

1 piece	1512
---------	------

Technical data

Product	Voltage	Weight	Dimensions (HxWxD)
Injector control A	DC-motor: 4 watts / 12 Volt	~600 g with integrated rechargeable battery	200x220x65 mm

Ear impression & Direct fitting Accessories

Impression syringes

The double piston principle enables simple filling as well as a stable and easy injection. The transparent cylinder makes the injection process visible. Details, such as the screwing of pistons and bottom part, are practical in application. The CIC impression syringe is advantageous for narrow auditory canals, such as those of children. Internal and external parts can be ordered individually.

Standard	532
Standard	533
CIC	534



Dosing spoons

The dosing spoons enable an appropriate dosage of addition-vulcanizing ear impression silicones. Unmistakable assignment to the components through the color coding. With a volume of 5 ml each it is perfectly adjusted to the average ear impression.

1 set	4610
-------	------



Large mixing spatula

Made of metal with plastic handle.

1 piece	198
---------	-----



Mixing tray

With dosing scale.

1 piece	551
---------	-----



Mixing pad

100 sheets	547
------------	-----



Ear impression & Direct fitting Accessories

HEINE mini 3000® LED Fiber Optic Otoscope

Modern otoscope with maintenance-free LED illumination. Twice as bright as a conventional Xenon Halogen otoscope. The result is an evenly illuminated light field with an excellent color rendering. The lateral circular Fiber Optic (F.O.) illumination enables shadowless lighting of the tympanum and the auditory canal.

- incl. 10 disposable funnels, 5 x Ø 2.5 / 4.0 mm

HEINE mini 3000® LED Fiber Optic Otoscope	540
---	-----



Heine mini 3000® Fiber Optic Otoscope with fiber optic illumination

540

HEINE mini 3000® Otoscope

Modern pocket Otoscope in a unique, compact design with enhanced Xenon-Halogen-Lighting-Technology (XHL) for 100 % concentrated white light for perfect illumination. Viewing window with 3x magnification and optimized casing surface for razor-sharp images and minimal reflection. The high quality handle consists of a chrome finished upper section and refined plastic which is shockproof, robust and slip-resistant.

- incl. 4 funnels for permanent use Ø 2.4 / 3.0 / 4.0 / 5.0 mm
- + 10 disposable funnels, 5 x Ø 2.5 / 4.0 mm

HEINE mini 3000® Otoscope	541
HEINE mini 3000® Otoscope in a case	5415



Heine mini 3000® Otoscope with Xenon Halogen Direct Illumination

541

HEINE mini-e ear light (LED)

The HEINE mini-e® ear light is equipped with a unique LED^{HQ}. The robust and durable ear light has a virtually unlimited service life with 20,000 guaranteed operating cycles.

HEINE mini-e® ear light (LED)	560
-------------------------------	-----

HEINE mini-e ear light (LED) Replacement head

Incl. LED and ear light tip.

Replacement head	5601
------------------	------



5601

Spare bulbs

HEINE mini 2000® Otoscope	5454
HEINE mini 3000® Otoscope	5414
HEINE mini 3000 F.O. Otoscope	5402
HEINE ear light	5393
HEINE mini-c® ear light	5383



5454

5414

5393

5383

Ear light tips for HEINE mini-c® ear light

For the placement of impression pads in the auditory canal.

40 mm	5380
-------	------



5380

560

Ear impression & Direct fitting Accessories

Funnels for HEINE Otoscopes

4 pieces	Funnel for permanent use	Ø 2.4 mm / 3.0 mm / 4.0 mm / 5.0 mm	5451
1 piece		Ø 2.4 mm	5459
		Ø 3.0 mm	5460
		Ø 4.0 mm	5452
		Ø 5.0 mm	5453
50 pieces	Ø 2.4 mm	5464	
	Ø 3.0 mm	5467	
	Ø 4.0 mm	5462	
	Ø 5.0 mm	5463	
250 pieces	Disposable funnel	Ø 2.5 mm	1635
		Ø 4.0 mm	1636



Dispenser for disposable funnels

Dispenser incl. 50 disposable funnels, each Ø 2.5 und 4.0 mm	1637
--	------

Jaw tweezers

For a safe insertion of impression pads.

1 piece	170
---------	-----



Scissors with rounded ends

For hair removal in the ear.

1 piece	162
---------	-----



Vented impression pads

Especially for deep ear impressions, as the ventilation tube serves to equalize the pressure when delivering the material and removing the impression.

24 pieces	Ø 7 mm	5671
	Ø 9 mm	5672
	Ø 11 mm	5673
	Ø 13 mm	5674
	Ø mixed: 7, 9, 11, 13 mm 6 pieces of each diameter	5675



Impression pads

Foam cone with safety thread to protect the ear drum during impression taking. The pads consist of flexible foamed material and seal the auditory canal by a safe fitting. Insertion with jaw tweezers and ear light. The impression pads CIC are suitable for children or narrow auditory canals.

100 pieces	Cone form: Ø approx. 11 mm, length: 12 mm, Standard	565
	Cone form: Ø approx. 11 mm, length: 7 mm, CIC	566



Vented impression pad

Due to the pressure compensation between the auditory canal and surrounding areas the impression material is directed deeply to the vented pad. Particularly for deep impressions.



Standard impression pad

The impression material is not directed to the pad as pressure compensation does not take place.



Digital manufacturing

More than 3D printing

Automated manufacturing by means of 3D printing has long been the state of the art in hearing acoustics. As the first earmold laboratory, Dreve has been involved from the beginning and had a decisive influence on today's manufacturing processes.

Our continuous research and development constantly sets new standards. You can rely on our high-quality materials and validated processes for the digital manufacturing of hearing aid earmolds and shells.



Some of our products
are TPO free and can be
recognized by this symbol

Digital manufacturing FotoTec® & FotoCast®



FotoTec® DLP.flex clear transparent



FotoTec® DLP.A reddish transparent



FotoCast® red transparent

Digital manufacturing

Overview of additive manufacturing processes



Material	DLP (Digital Light Process)	LCD (Liquid Crystal Display)	SL (Stereolithography)
FotoTec® DLP.A	•		
FotoTec® DLP.flex	•		
FotoCast®	•		•
FotoCast® 2		•	
FotoTec® SL.A			•
FotoTec® SL.E	•		•

Digital manufacturing FotoTec®

FotoTec® DLP.A

The premium material for the 3D printing process. FotoTec® DLP.A is a biocompatible resin with ideal features for 3D Printing. Aligned to the wavelength of 385nm the material is perfect to manufacture earmolds and shells.

- Optimized initiator system
- Low viscosity for easy cleaning and minimum adhesive forces
- Perfect surface quality

1.0 kg	brilliant transparent		24000
	clear transparent		24100
	reddish transparent		24200
	red transparent		24400
	blue transparent		24500
	beige opaque 1		24300
	beige opaque 2		24600
	beige opaque 3		24650
	deep black opaque		24955
	reddish orange transparent		24710
	orange transparent		24720
	green opaque		24910
	purple transparent		24810
	grey transparent		24820
	neon yellow transparent		24550

0.5 kg	deep black opaque		24950
	white brilliant		24700

Tip
from the
pro

FotoTec® DLP materials are compatible for printers with a wavelength of 385 nm.



FotoTec® DLP.flex

Flexible material for manufacturing elastic earmolds and RICs on 3D DLP printing systems.

- Lean manufacturing: Increase of capacities and automation
- Simple and direct process
- Enhanced wearing comfort

1.0 kg	70 Shore A	clear transparent	42100
	90 Shore A	clear transparent	42200



Digital manufacturing FotoTec® & FotoCast®

FotoCast®

For the generative manufacturing of cast forms to produce soft earmolds and hearing protection.

- Shortened construction time due to optimum mechanical properties and special viscosity
- Low cleaning effort after building cast forms
- Easy filling of the printed cast form and after polymerization easy extraction of the Biopor® AB earmolds

1.0 kg	red transparent	14000
--------	-----------------	-------



FotoCast® 2

For the generative manufacturing of cast shells to produce soft earmolds and hearing aid protection.

- Works without post-curing
- No separator needed
- No Toxics: No use of raw materials that are harmful to health

1.0 kg	yellow transparent	14010
--------	--------------------	-------



FotoTec® SL.E

The versatile material for earmolds. FotoTec® SL.E is ideally suited for the production of thin-walled BTE and RIC earmolds.

- 1 material for several 3D printing systems
- For the manufacturing of earmolds, RICs and shells
- For Stereolithography and DLP

1.0 kg	clear transparent	14100
	beige opaque 1	14300
	red transparent	14400
	blue transparent	14500



FotoTec® SL.A

Proven laser-curing resin for the manufacturing of BTE earmolds and ITE shells on the basis of the 3D Stereolithography process.

- Tested biocompatibility
- Smooth, homogeneous surface
- Brilliant surface sealing with FotoScreen

1.0 kg	clear transparent	7100
	reddish transparent	7200
	beige opaque 1	7300
	red transparent	7400
	blue transparent	7500



Digital manufacturing

Digital manufacturing Devices

PCU vario

Laboratory device on LED basis for curing 3D printed components. Ensuring mechanics and biocompatibility through effective deep curing. The PCU vario offers both the option of a vacuum atmosphere and the option of curing under nitrogen. Biocompatible curing without an inhibition layer can be ensured.

- Open system with 30 freely programmable memory locations
- Modular design with up to 3 polymerization chambers and only one control module
- Logging and monitoring of process parameters
- Nitrogen and vacuum atmosphere possible

PCU vario	4319
-----------	------



PCU LED N₂

PCU LED N₂ is the post-curing unit for safe manufacturing of 3D printed medical devices. Thanks to the option of post-curing in a nitrogen atmosphere, the PCU LED N₂ is ideal for the production of earmolds, RICs and shells without inhibition layers. The software concept guarantees the user a simple operation and with the LED quick test an immediate check of the LED functionality. The administrator can define programs and read protocols. Further, he can calibrate and update the system.

- Curing under various atmospheric conditions (ambient air, vacuum or nitrogen)
- LED quick test for detection of the most common LED errors
- Long LED lifetime (approx. 20,000h)
- Password protected admin menu for secure data input
- Low operating and maintenance costs
- Logging and monitoring of process parameters
- Data transfer via USB

PCU LED N ₂ with vacuum and nitrogen	4317
---	------



Technical data

Device	Voltage	Polymerization chamber	Weight	Dimensions (HxWxD)
PCU vario	100–240 V / 50–60 Hz / 500 W	–	approx. 38 kg	240x660x410 mm
PCU LED N ₂	100–240 V / 50–60 Hz	65x150x150 mm	9.3 kg	110x389x276 mm

Digital manufacturing Devices

FotoWash

Cleaning unit for 3D printed components after the printing process. Unit with magnetic stirrer technology and automatic transfer between the two basins. Various cleaning programs can be selected and created via the touchscreen. The platform of the Sonic XL 4K can be hooked directly into the unit and can be cleaned together with the adhering components.

- Matched cleaning profiles for the FotoTec® materials
- Optimal supplement for the Sonic XL 4K
- Automatic transfer between pre-cleaning and post-cleaning

FotoWash	D3600
----------	-------



Sonolux Flash Evo

High-performance light curing unit with Xenon-stroboscope flashlights

The Sonolux Flash Evo is a light polymerization unit for the post curing of generative parts made of FotoTec® resins under protective gas (nitrogen). The protective gas atmosphere prevents the formation of an inhibition layer (smear layer) on the surface of earmolds and hearing aid shells. Thanks to the electronic timer, which can be programmed individually, all production steps as nitrogen supply, polymerization time and break times can be set precisely.

230 V/50 Hz	120103
115 V/60 Hz	120103A
220 V/60 Hz	120103B



FotoClean

FotoClean is a ready-to-use, water-based cleaning mixture for use in the Bandelin heated ultrasonic cleaning unit to clean additively manufactured components.

2 x 1 l	50000
5 l	50001



Technical data

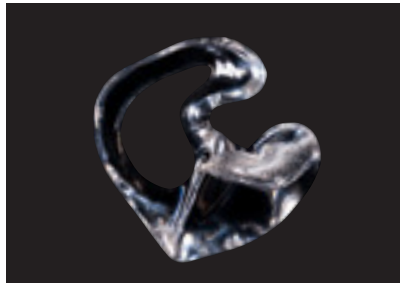
Device	Voltage	Polymerization chamber	Weight	Dimensions (H x W x D)
Sonolux Flash Evo	230 V / 50 Hz, 220 V / 60 Hz, 115 V / 60 Hz	40 x 140 x 180 mm	16.6 kg	195 x 517 x 295 mm

Digital manufacturing Lacquers



FotoScreen®

- High gloss with absolute transparency
- Lotus effect for easy cleaning
- Extremely resistant protective layer for a long earmold lifetime
- Flexible use in all current Dreve post-curing units



VarioScreen®

- Flexible surface coating for better elongation of earmolds
- High gloss lacquer for FotoTec® DLP.A, FotoTec® DLP:flex and VarioTherm® Plus earmolds
- No Toxics: No use of raw materials that are harmful to health, TPO-free



SoftTouch Lack

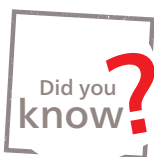
- Secure fit in the ear
- High wearing comfort due to anti-slip effect and pleasantly soft haptics
- High bond strength with FotoTec®
- Tangibly high-quality surface refinement
- Scratch and abrasion resistant

FotoScreen®

For a high-gloss experience

The premium lacquer is characterized by brilliant surface properties on hard earmolds and can also be used flexibly in all current Dreve post-curing units.

20 ml	brush included	clear transparent	0805
50 ml	brush included	clear transparent	0806
250 ml		clear transparent	0807



The optimal finish is achieved with FotoScreen – brilliant, durable, flexible

VarioScreen®

Innovative lacquer for earmolds made of FotoTec® DLP.A, FotoTec® DLP:flex and VarioTherm® Plus.

- Easy-to-use one component lacquer
- Great bonding
- High gloss coating for earmolds
- Achieves an outstanding surface quality

250 ml	clear transparent	14691
--------	-------------------	-------



VarioTherm® earmold lacquered with VarioScreen

Digital manufacturing Lacquers

SoftTouch Lack

For a secure grip

Varnish for acrylic earmolds with special anti-slip effect. The extremely elastic and light-curing lacquer achieves a secure fitting in the ear and high wearing comfort.

20 ml	brush included	clear transparent	4422
50 ml	brush included	clear transparent	4423
250 ml		clear transparent	4424

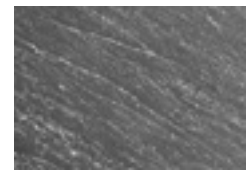


Fotoplast® Lack M

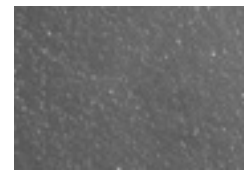
For a satin finish

The light-curing varnish for hard acrylic earmolds has special fillers achieving a silk-mat surface. The coating optically and haptically exceeds rough surfaces treated with sandpaper and offers all positive characteristics of traditional UV coatings.

50 ml	brush included	clear transparent	49431
-------	----------------	-------------------	-------



Surface treated with sandpaper, unpainted, magnification 45x



Surface coated with Fotoplast® Lack M, magnification 45x

NanoScreen™ Lack

The coating for hard earmolds and ITE shells creates a specific surface energy of extreme homogeneity and hardness that is easy to clean. Curing is recommended in a post-curing unit under a nitrogen atmosphere.

20 ml	brush included	clear transparent	4942
50 ml	brush included	clear transparent	4945
250 ml		clear transparent	4946



Earmold lacquered with NanoScreen™ Lack

FotoTec® Repair

FotoTec® Repair is a light-curing one component resin in premium quality for repairing ITE shells and BTE earmolds.

- Easy processing
- Color variety
- With 3 dosing tips each

10 ml	clear transparent	7110
	red transparent	7410
	blue transparent	7510
	beige opaque 1	7310
	beige opaque 2	7610



Digital manufacturing DACS 2.0

DACS 2.0

The automated coating process of custom-made earmolds is an essential part of the manufacturing workflow since 2009 when the first DACS has been put into operation at Dreve in Unna.

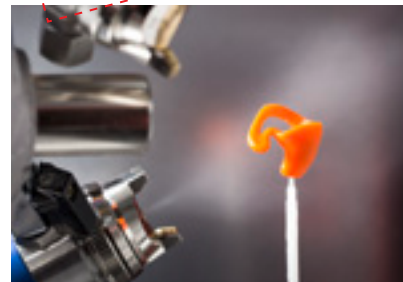
The high production capacity of the system, which among other things generates high-quality reproducible results through controlled lacquer layer application and optimized exposure parameters, leads to a system concept that is used as a module in the automated, process-controlled production of earmolds in the hearing aid industry.

DACS 2.0	4000
----------	------

System description

As an improvement, the DACS 2.0 is easy to implement in the manufacturing process and belongs to the smallest coating machines in the coating industry based on a small footprint and a compact construction. A simple installation is guaranteed as it includes all necessary connections and also a suction unit. A further advantage of the small machine is the possibility to spray not only UV acrylic lacquers but also UV silicone lacquers. The process-controlled, automated application of biocompatible silicone lacquers guarantees excellent surface quality on silicone applications such as earmolds or hearing protection.

Capacity:
up to 300 parts / h



Automated coating in DACS 2.0



Digital manufacturing DACS 2.0



- ⊕ Increased production capacity with shorter production time compared to the traditional coating process (brushing or dipping)
- ⊕ Less personnel commitment costs in manufacturing and quality inspection
- ⊕ Lacquering is process controlled
- ⊕ Optimized light curing parameters
- ⊕ Reproducible results of high quality coatings
- ⊕ For biocompatible sprayable acrylic lacquers
- ⊕ For biocompatible sprayable silicone lacquers

Technical data

Device	Part size	Power input	Temperature	Exhaust duct	Dimensions (HxWxD)
DACS 2.0	Ø < 50 mm, H < 50 mm	approx. 2 kW	20–25 °C	2,000 m ³ /h	1970x880x2250 mm



Handcrafted manufacturing

Traditionally manual

Our specially matching working materials and the large selection of Biopor® AB silicones, Fotoplast® acrylates and lacquers facilitate the daily working process in the production of individual and precisely fitting earmolds in the manual process. Our biocompatible materials are characterized by easy processing and fast polymerization.

Biopor® AB

Biopor® AB is a high-quality, permanently flexible, addition-vulcanizing and skin-friendly silicone. Indirect manufacturing takes place in the laboratory after impression-taking or scanning.

25 Shore A

8 x 50 ml	Double cartridge	clear transparent	28351
		reddish transparent	28301
		red transparent	28311
		blue transparent	28321
		yellow transparent	28331
		green transparent	28361
		red opaque	28312
		blue opaque	28322
		yellow opaque	28332
		white opaque	28362
		orange opaque	28303



Handcrafted manufacturing Biopor® AB

40 Shore A

8 x 50 ml	Double cartridge	clear transparent	28200
		reddish transparent	28201
		red transparent	28207
		blue transparent	28290
		emerald green transparent	28120
		purple transparent	28208
		pink transparent	28209
		medium brown transparent	28292
		light brown transparent	28293
		red opaque	28212
		blue opaque	28222
		yellow opaque	28232
		white opaque	28262
		orange opaque	28203
		green opaque	28242
		black opaque	28252
		beige opaque	28272
		purple opaque	28202
		pink opaque	28204
		neon yellow opaque	28214
		neon green opaque	28215
		neon pink opaque	28216
		neon orange opaque	28217
		turquoise metallic	28101
		silver metallic	28105
		blue metallic	28106
		red metallic	28108
		pink metallic	28109
		black metallic	28113
		champagne metallic	28114
silver transparent metallic	28117		
smoky grey metallic	28124		
400 ml	Double cartridge	reddish transparent	282



60 Shore A

8 x 50 ml	Double cartridge	clear transparent	28400
		reddish transparent	28401
		blue transparent	284121
		light brown transparent	28493
		medium brown transparent	28492
		red opaque	28412
		blue opaque	28422
		yellow opaque	28432
		white opaque	28462
		orange opaque	28434
		green opaque	28442
		black opaque	28452
		beige opaque	28472
		purple opaque	28416
		fuchsia magenta opaque	28415
		azur blue opaque	28423








Handcrafted manufacturing Biopor® AB

Biopor® AB fluoreszent

The addition-curing silicone fascinates with its signal colors, which do not lose their luminosity even in the dark and thus ensure luminous moments. As hearing and splash water protection, the fluorescent silicone offers a wide range of applications for work and leisure.

40 Shore A


8 x 50 ml	Double cartridge	yellow fluorescent		28700
		green fluorescent		28701
		blue fluorescent		28702
		magenta fluorescent		28703
		red fluorescent		28704
		orange fluorescent		28705






Biopor® AB light

Addition-vulcanizing silicone for high-quality, durable splash water protection plugs. Thanks to the low weight Biopor® AB light earmolds stay floatable even when lacquered. For a brilliant, easy to clean surface we recommend our silicone lacquers.

16 Shore A

8 x 50 ml	Double cartridge	reddish transparent		28501
-----------	------------------	---------------------	---	-------

25 Shore A

8 x 50 ml	Double cartridge	purple opaque		28516
		light blue opaque		28524
		dark blue opaque		28525
		dark red opaque		28526
		neon yellow opaque		28527
		neon pink opaque		28513
		neon orange opaque		28593
		neon green opaque		28543
		black opaque		28552
		white opaque		28562
		beige opaque		28571



Earmolds from Biopor® AB light and Biopor® AB fluoreszent float on the water surface.

Overview Earmold Silicones

Product	Consistency	Production methods	Processing time (23 °C ±1 °C)	Setting time (23 °C ±1 °C)	Application
Biopor® AB	medium-bodied – Type 2	with FotoCast®, Fotogel, plaster	2:45 min. ± 45 sec.	15 min. ± 5 min.	Hearing protection, BTE
Biopor® AB fluoreszent	medium-bodied – Type 2	with FotoCast®, Fotogel, plaster	2:30 min. ± 30 sec.	25 min. ± 5 min.	Hearing protection, BTE, water protection
Biopor® AB light	medium-bodied – Type 2	with FotoCast®, Fotogel, plaster	2:30 min. ± 30 sec.	25 min. ± 5 min.	BTE, water protection

Handcrafted manufacturing Biopor® AB

Biopor® AB

Simply the best

2 become 1: We have successfully combined the advantages of Biopor® AB Xtreme with those of Biopor® AB. Now we offer you one silicone for soft and flexible earmolds that combines the best features of both products.

- Extreme tensile strength
- Great selection of bright shining colors
- Highly precise, robust, but also soft earmolds
- Naturally biocompatible
- Very comfortable to wear due to soft feel
- Longevity

Handcrafted manufacturing Lacquers

NanoScreen™ Soft Lack

The NanoScreen™ Soft Lack already shows its effect after a few hours and after 12–24 hours it features a sterile silicone surface. The growth of bacteria is reduced considerably.

- Less bacteria on the silicone surface
- Durable coating that is easy to clean

20 ml, incl. 5 brushes	0801
50 ml, incl. 5 brushes	0802
250 ml	0803

Protection against
bacterial growth!
Easy cleaning!



Lack B eco

The properties of the moisture-curing coating B eco correspond to those of the proven Lack B.

- Optimized formulation: Less odor and stays fresh longer in the bottle
- User friendly, contains no toluene
- Brilliantly shiny, clear transparent surface
- Moisture-curing
- For lacquering all silicone earmolds made of Biopor® AB
- Excellent bond between silicone earmold and the layer of Lack B eco
- Robust and durable coating

20 ml, incl. 5 brushes	0811
50 ml, incl. 5 brushes	0812
250 ml	0813



Lack B matt

Moisture-curing lacquer with mat finish to varnish silicone earmolds.

- Optimized formulation: Less odor and stays longer fresh in the bottle
- Silky smooth, mat surface
- User-friendly, contains no toluene
- Moisture-curing
- For lacquering all silicone earmolds made of Biopor® AB
- Excellent bond between silicone earmold and the layer of Lack B matt
- Durable coating and compared to corundum treated surfaces much easier to clean

20 ml, incl. 5 brushes	0814
50 ml, incl. 5 brushes	0815
250 ml	0816



Handcrafted manufacturing Lacquers

Lack B

Humidity-curing silicone lacquer for earmolds made of Biopor® AB.

20 ml, incl. 5 brushes	309
50 ml, incl. 5 brushes	081
250 ml	082



Do not leave moisture-curing lacquers exposed to air for too long!



Biopor® AB UV Lack / Biopor® AB RT Lack

Ideal coating for Biopor® AB earmolds on the basis of an addition-vulcanizing silicone. The Biopor® AB UV and RT Lack are free of solvents and odorless. Please consider the different curing systems of the Biopor® AB lacquers: Biopor® AB UV Lack cures with UV light; Biopor® AB RT Lack cures at room temperature.

Please note the different curing systems of Biopor® AB coatings: Biopor® AB UV coating is a UV light curing coating, Biopor® AB RT coating cures at room temperature.

- Free of solvents
- Odorless
- Dipping or brushing possible
- Skin-friendly and biocompatible
- Shiny, durable and easy to clean surface

50 ml	Double cartridge	Biopor® AB UV Lack	0831
		Biopor® AB RT Lack	0834



Don't forget: Biocompatibility can only be guaranteed if the recommended light devices are used for curing.



Handcrafted manufacturing

Biopor® AB Lacquers

Product	Curing with	Curing Time	Processability in mixed condition	For lacquering of
Biopor® AB UV Lack	UV light	Polylux: 10 min. PCU Evolution: 5 min.	90 min.	All Biopor® AB earmolds
Biopor® AB RT Lack	Room temperature	15 min.	2.5 min.	

Handcrafted manufacturing Lacquers

Biopor® UV-S

The optimized formulation of our antistatic Biopor® UV-S coating makes it easier to remove dust from coated silicone earmolds.

Additives that reduce the surface resistance of the coated earmold and thus its chargeability thereby minimize the accumulation of particles. In addition, the coating exhibits excellent mechanical properties such as high elongation and very good tear resistance.

- High-gloss, clear-transparent surface
- UV light curing
- Antistatic property

22 ml A component & 220 ml B component	4251
--	------

DiluSoft

Diluting agent for NanoScreen™ Soft.

250 ml	0804
--------	------

Diluting agent

For Lack B eco and Lack B matt.

250 ml	0817
--------	------

Desol

Diluting agent for Lack B and Glusil.

250 ml	086
--------	-----

Separator

Separating agent for the manufacturing of Biopor® AB earmolds with the FotoCast® process.

50 ml	370
-------	-----

Biopor® Marker eco

Colored silicone material for the visibility of engravings on silicone earmolds.

50 ml	white	08135
	blue	08136
	red	08137
	black	08138
100 ml	white	08131
	blue	08132
	red	08133
	black	08134



Handcrafted manufacturing Pressure polymerization devices

Polymax 1

Pressure polymerization unit with a temperature range up to 95 °C (203 °F) for one brass flask including clamp or four large rubber embedding molds (Ø 50 mm).

- Incl. pressure hose and water drain hose

230 V – 50/60 Hz	3429
115 V – 50/60 Hz	3429A

Flask holder

For Polymax 1 & 5.

1 piece	6681
---------	------



Pressure polymerization with Polymax

Polymax 5

Pressure polymerization unit with a temperature range up to 95 °C (203 °F), with infinitely variable pressure from 3 to 6 bar. Thanks to the big volume of the pressure pot a high quantity of earmolds can be polymerized.

- Incl. pressure hose and water drain hose

230 V – 50/60 Hz	3423
115 V – 50/60 Hz	3423A



Pressure pot inner dimension:

Ø 220 mm
Height 174 mm



Pressure pot inner dimension:

Ø 160 mm
Height 110 mm



Technical data

Device	Power consumption	Pressure	Temperature	Weight	Dimensions (H x W x D)
Polymax 1	450 watts at 115/230 V	min./max.: 3/5 bar	up to 95 °C	10.2 kg	225 x 295 x 315 mm
Polymax 5	900 watts at 115/230 V	min./max.: 3/6 bar	up to 95 °C	16.9 kg	310 x 345 x 385 mm

Handcrafted manufacturing Fotoplast® & Lacquers



Processing Fotoplast®

Fotoplast® S hard

Transparent material for BTE earmolds with hard and highly break-resistant final consistency. Shell-forming. Free of MMA and cadmium. Due to individual coloring ideal for fashion earmolds.

250 g	clear transparent	43200
500 g	clear transparent	43300
1,0 kg	clear transparent	43400
250 g	reddish transparent	43201
500 g	reddish transparent	43301
1,0 kg	reddish transparent	43401



Fotoplast®
Optimum curing with the Dreve PolyLux light curing devices.

Fotoplast® S IO

Hard material for thin-walled shells (adjustable by exposure time: 0.5–1.2 mm) especially for ITE hearing systems. Same wall thicknesses even for larger production quantities.

100 g	opaque H (yellowish)	4361
	red transparent	4822
	blue transparent	4824
500 g	opaque H (yellowish)	437
	clear transparent	4821
	red transparent	4823
	blue transparent	4825
	black transparent	4829
	opaque B (brownish)	4852
	opaque T (tan)	4854
	dark brown opaque 2	48551



Handcrafted manufacturing Fotoplast® & Lacquers

Thermosoft

Shell-forming material for the manufacturing of flexible ITE shells. We recommend to finish the surface with Thermosoft Lack.

500 g	clear transparent	46700
-------	-------------------	-------



Fotoplast® Lack 3

For lacquering resp. "glazing" of all hard earmolds instead of mechanical polishing. Brilliant, tissue-friendly surface sealing. Biocompatible.

20 ml	brush included	496
50 ml	brush included	497
250 ml		498



Thermosoft Lack

Soft, biocompatible lacquer for the coating of Thermosoft earmolds or for an adhesive coating of Fotoplast® earmolds. Glysol or Oxystop Fluid is needed for curing without inhibition layer.

20 ml	brush included	4433
50 ml	brush included	4443
250 ml		4453



Fotoplast® Gel

Light curing repair resin in thixotrope-stable consistency. Packed in tubes or dosing syringes with 3 long, flexible dosing tips. Working on ventings and repairing is very comfortable with the flexible dosing syringes.

10 ml	Dosing syringe	clear transparent	44811
		opaque H (yellowish)	44821
		red transparent	44831
		blue transparent	44841
20 ml	Tube	clear transparent	44691
		opaque H (yellowish)	44651
		red transparent	44612
		blue transparent	44622

Processing Fotoplast® Gel



Handcrafted manufacturing Light Polymerization Devices

PCU LED 24

Light polymerization unit for curing coatings in a nitrogen atmosphere. Completely mirrored polymerization chamber with sufficient space to accommodate two turning motors. Exposure with high light intensity exclusively from the top. The administrator has the possibility to define ten programs and store them on the unit directly. For optimum process control, all curing parameters are logged and stored in a file.

PCU LED 24	4318
------------	------



Polylux LED

The Polylux LED has an innovative integrated LED technology that is especially suited for polymerization of Fotoplast®-resins and Dreve lacquers. The LED light source is extremely durable and ensures a gentle polymerization of UV-material.

Polylux LED	408
-------------	-----



Curing of a lacquered earmold with a Polylux LED



Technical data

Device	Voltage	Polymerization chamber (HxWxD)	Capacity	Weight	Dimensions (H x W x D)
PCU LED 24	100–240 V / 50–60 Hz, 150 W	65x150x150 mm	1–2 earmolds	9.3 kg	110x389x276 mm
Polylux LED	100–240 V 50–60 Hz, 0.9 A	Ø 95 mm x height 70 mm	1–2 earmolds	1.5 kg	205x205x255 mm

Handcrafted manufacturing Light Polymerization Devices

Stainless steel turning motor

Small battery-powered turning motor with stainless steel casing. Tool-free battery change.

Dimensions: H 50 x W 73 x D 33 mm.



Stainless steel turning motor	4999E
-------------------------------	-------

Polylux 100 Set with turning motor

The Polylux 100 is a basic light polymerization unit for repairings and lacquerings. The unit is equipped with a UVA light source and mirrored internal inner surfaces, which ensure safe polymerization.

- It is very space saving and easy to use
- With Fotoplast® Lack 3 for surface refinement and with Fotoplast® Gel for repairings
- By positioning the turning motor next to the Polylux 100, a uniform, fully cured surface is achieved.

Polylux 100 Set with turning motor	405
------------------------------------	-----



Technical data

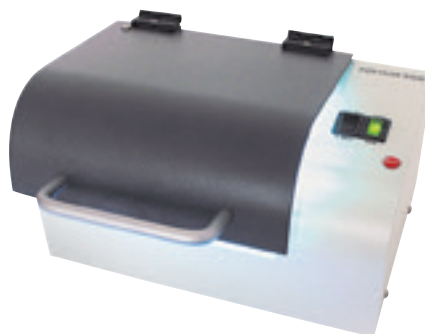
Device	Power consumption	Light wave spectrum	Polymerization chamber (H x W x D)	Capacity	Weight	Dimensions (H x W x D)
Polylux 100	30 watts	315–400 nm	88x90x130 mm	1 earmold	1.7 kg	100x95x240 mm

Handcrafted manufacturing Light Polymerization Devices

Polylux 500

This compact unit is made up of a robust, powder-coated metal housing and a large, practical lid. The polymerization chamber is completely mirrored so a turning motor is not necessary for curing of coatings. The polymerization chamber provides space for four negative molds for earmolds with clamping tweezers. Additional safety is provided by the timer, which can be used to limit the maximum polymerization time to 5 or 10 min. The Polylux 500 enables the polymerization of resins and lacquers from our Fotoplast® range.

Polylux 500	403
-------------	-----



UVA-light tubes

For the wavelength of 315–400 nm.

7 watts for Polylux Carousel III	51519
9 watts for Polylux 100 and 500	51514
18 watts for Polylux 1000/1000N	51507



Megalux soft-start

Handy light curing device with a halogen bulb for the polymerization of vents made of light-curing resins and for partial light curing. The desired irradiation time can be set using the time preselection buttons: soft-start (10 s +30 s maximum power), 20 s, 40 s, D=continuous operation. Including focusing quartz glass as standard light conductor.

230 V – 50/60 Hz	4885
------------------	------



Technical data

Device	Power consumption	Light wave spectrum	Polymerization chamber (H x W x D)	Capacity	Weight	Dimensions (H x W x D)
Polylux 500	35 watts	315–400 nm	50x150x95 mm	4 earmold	3.2 kg	110x215x190 mm

Handcrafted manufacturing Accessories

Cleaning liquid

For cleaning earmolds before lacquering and removing the inhibition layer.

250 ml	471
--------	-----



Fotofix faceplate glue

Faceplate glue, helpful for manufacturing and repairing ITE systems. Color-matched to our popular Fotoplast® S IO shell materials, Fotofix prevents visible gaps between faceplate and shell.

20 ml	brush included	clear transparent	480
-------	----------------	-------------------	-----



Glysol

Polymerization bath for curing Thermosoft varnish and filling the earmold cavities for shell creation.

250 ml	449
1 l	450



Fotoplast® Color Concentrate

For coloring Fotoplast® materials. Transparent to opaque depending on the amount of color used.

20 ml	red		47712
	blue		47722
	yellow		47732
	green		47742



Conical brass holder with clamp

For fixing the earmold during lacquering.

Conical brass holder with clamp	4273
Single clamps for conical brass holder, 10 pieces	4274



Cover plates

To prevent polymerization from above when manufacturing shells.

50 pieces	429
-----------	-----



Handcrafted manufacturing Mold manufacturing

Labormat TH

Compact boiling-out unit for up to 6 flasks.
Also suitable for polymerization of earmolds up to 95 °C.

- Cleaning brush and cuvette support plate are included in delivery

Labormat TH	3603N
-------------	-------

- ⊕ Stainless steel housing
- ⊕ Continuously adjustable temperature up to 95 °C (up to 203 °F)
- ⊕ Individual spraying-time adjustment with 6-minute timer
- ⊕ Hand spray gun included
- ⊕ Practical hinged lid
- ⊕ Button for short term operation



Rack for Labormat TH

Made of powder-coated steel, on castors, H 435 x W 590 x D 370 mm.

1 piece	3607
---------	------



Flask basket for Labormat TH

Suitable for 3 flasks. 2 flask baskets fit into the Labormat TH.

1 piece	3604
---------	------



Wax dipping unit

Melting and warming device for paraffin dipping waxes. Suitable for a temperature range from approx. 10 °C (50 °F) to 100 °C (212 °F). The temperature control is infinitely variable. The container holds approx. 500 ml paraffin wax.

Wax dipping unit	7807
------------------	------



Technical data

Device	Power consumption	Voltage	Device	Filling	Weight	Dimensions (H x W x D)
Labormat TH	3.2 KW	230 V / 50 Hz	–	–	35 kg	500x570x400 mm
Wax dipping unit	100 watts	220–230 V / 50 Hz	Ø 100 mm, H 115 mm	max. 500 ml min. 300 ml	800 g	200x176x176 mm

Handcrafted manufacturing Mold manufacturing

Paraffin dipping wax

Forms an even insulating layer on the silicone impression. Processing temperature: 75 °C (167 °F).

1.0 kg	314
--------	-----



Thermometer

For temperature control.

1 piece	782
---------	-----



Electric wax knife (Set)

Efficient modelling kit for wax processing and for corrections of impressions with wax. Four different modelling syringes and one rack included.

1 set	7793
-------	------



Wax knife

large	657
small	656



Dipping instrument metal

1 piece	395
---------	-----



Signing pencil

1 piece	672
---------	-----



Impression lifter metal

For removing impressions.

1 piece	650
---------	-----



Brush

For lacquering.

10 piece	673
----------	-----



Handcrafted manufacturing Mold manufacturing

Modelling wax

- Thickness of sheets: 1.25 mm

0.5 kg	rose	311
--------	------	-----



Adhesive wax

- Diameter: 75 mm
- Height: 8 mm

10 sheets	351
-----------	-----



Dosper evo

Automatic mixing and dosing unit for A-silicones to produce molds. The device guarantees an efficient workflow. To fill the Dosper evo we recommend using the original transparent material reservoirs.

- incl. 5 Mixing tips and 2 connectors for material containers (for 1.7 l)

230 V / 50–60 Hz	5050
115 V / 50–60 Hz	5050A

- ⊕ Flow control
- ⊕ Shortened and more secure working process
- ⊕ Reduction of shadows due to special light for the workstation
- ⊕ LED operating status indication



Technical data

Device	Voltage	Power consumption	Weight	Dimensions (H x W x D)
Dosper evo	230 V / 50–60 Hz 115 V / 50–60 Hz	250 W	10 kg	319x225x405 mm

Handcrafted manufacturing

Mold manufacturing



Production of a mold with the Dosper evo



Dosper evo
When connecting the original containers, pierce a small hole in the tops of the containers to compensate for the silicone that is draining off, in order to compensate for the volume.
... or simply use the material reservoirs!

Material reservoirs Dosper evo

Transparent containers made of stable plastic for A-silicones. Equipped with quick connectors for an easy installation. Filling volume: 1.7 l / reservoir

2 pieces	5022
----------	------



Connecting tube Dosper evo

Suitable for the 5 l canisters, the red and black marking of the connecting hoses facilitate the assignment to the A+B components. Use with the rack for the Dosper evo.

1 set	49366
-------	-------



Rack Dosper evo

1 piece	49364
---------	-------



Cuff forms

Ø 26.0 mm	50 pieces	420
Ø 35.0 mm	25 pieces	417
Ø 40.0 mm	25 pieces	416
Ø 50.0 mm	25 pieces	411
Ø 26.0 mm	Base parts for cuff forms	425
Ø 35.0 mm	Base parts for cuff forms	422
Ø 40.0 mm	Base parts for cuff forms	421
Ø 50.0 mm	Base parts for cuff forms	426



Handcrafted manufacturing

Handcrafted manufacturing Duplicating silicones

Formasil 2K

Two-component silicone for the production of negativ molds, addition-vulcanizing, 1:1 mixing – also manually.

- Final hardness: 14 Shore A

8 x 50 ml double cartridge, rose	629
2 x 1 l (A+B), rose	631
2 x 5 l (A+B), rose	633



Klarsil H

Two-component silicone for clear molds, addition-vulcanizing, 1:1 mixing.

- Final hardness: 16 Shore A

8 x 50 ml double cartridge, transparent	603
2 x 1 l (A+B), transparent	601
2 x 5 l (A+B), transparent	607



Fotosil

Two-component silicone in gel consistency, addition-vulcanizing, 1:1 mixing.

- Final hardness: 4 Shore A
- Low tensile strength
- UV-permeable

8 x 50 ml double cartridge, transparent, slightly cloudy	612
2 x 1 l (A+B), transparent, slightly cloudy	610
2 x 5 l (A+B), transparent, slightly cloudy	611



Fotogel

Special hydrocolloid gel for photopolymerization.

6.0 kg, transparent, slightly cloudy	448
--------------------------------------	-----



Fotogel Concentrate

Mixed with water in the mixing ratio 1:1 before use.

3.0 kg, transparent, slightly cloudy	4482
--------------------------------------	------

Gelon

Molding gel with a hard final consistency.

6.0 kg, green	347
---------------	-----



Handcrafted manufacturing Duplicating silicones

Isolat

Smooth surfaces of the earmold blanks are achieved through improved insulation.

1.0 l	368
5.0 l	369



Brass flask

For 4–5 Biopor AB® earmolds.

1 piece	768
---------	-----



Mold production with the Dublimat Pro

Dublimat Pro

Device for the melting of our reusable gels Fotogel and Gelon for the production of molds.

230 V / 50 Hz	3831
---------------	------

- Safe and controlled melting process
- Comfortable, easy and clear display operation
- Warming and re-cooling function guarantees economical material use (no material loss).
- Electronic timer enables a delayed start of the unit
- Activatable cooling fan accelerates the cooling down from melting to working temperature
- Special construction of the material outlet prevents gel from hardening in the tap



Handcrafted manufacturing

Technical data

Device	Total power	Heating power	Material capacity	Weight	Dimensions (H x W x D)
Dublimat Pro	400 watts	600 watts	6 kg melted hydrocolloide	21 kg	430x370x350 mm

Extras & Accessories

It may be quiet a little more

Each earmold is unique as a fingerprint and a small piece of art: So very often it is the tiny little things that count and determine the final quality of the product. That is why we dedicate ourselves also to the little things like accessory products – from drills to Mixing tips.

Tubing

Ø 1.5 x 2.5 mm

1 m	transparent	2041
10 m	transparent	20410
50 m	transparent	20450

Ø 2.0 x 3.0 mm

10 m	transparent	20010
50 m	transparent	20050
10 m	skin colored	0467110
50 m	skin colored	0467150
1 m	transparent, Stay Dry (PUR)	3021
10 m	transparent, Stay Dry (PUR)	30210
50 m	transparent, Stay Dry (PUR)	30250

Ø 2.0 x 4.0 mm

1 m	transparent	2031
10 m	transparent	20310
50 m	transparent	20350



Pre-bent tubing

Ø 1,5 x 2,5 mm

10 cm	10 pieces	transparent	04310
	100 pieces	transparent	043100

Ø 2.0 x 3.0 mm

10 cm	10 pieces	transparent	04110
	100 pieces	transparent	041100
	10 pieces	skin colored	0417110
	50 pieces	skin colored	0417150
	10 pieces	transparent, with anchor part	23410
	50 pieces	transparent, with anchor part	23450
	50 pieces	transparent, coated with Glusil	04250
	10 pieces	transparent, Stay Dry (PUR)	23510
	50 pieces	transparent, Stay Dry (PUR)	23550

Ø 2.0 x 4.0 mm

10 cm	10 pieces	transparent	04510
	50 pieces	transparent	04550



Extras & Accessories Tubing

Silicone tubing

Ø 2.0 x 3.0 mm

1 m	transparent	2021
10 m	transparent	20210

Ø 1.0 x 1.4 mm, for venting

1 m	transparent	1131
10 m	transparent	11310

Ø 1.2 x 2.0 mm, for venting

1 m	transparent	1141
10 m	transparent	11410

Arc tubing connection

With retentions.

10 pieces		239
-----------	--	-----

Arc tubing connection

Made of nylon.

10 pieces	Ø 1.45 x 2.25 mm	204110
100 pieces	Ø 1.45 x 2.25 mm	2041100
10 pieces	Ø 2.0 x 3.0 mm	22910
100 pieces	Ø 2.0 x 3.0 mm	229100

Small nylon tubing

Deformable by heat.

1 m	Ø 1.45 x 2.25 mm	20421
10 m	Ø 1.45 x 2.25 mm	204210
1 m	Ø 2.0 x 3.0 mm	2331
10 m	Ø 2.0 x 3.0 mm	23310

Tubing end piece

1 piece		255
---------	--	-----

Metal expanding coupling

10 pieces		23810
50 pieces		23850

Anchor part connection

10 pieces		23210
50 pieces		23250



Silicone tubes
Not deformable by heat and can only be bonded with silicone adhesive



Extras & Accessories Laboratory Equipment & Devices

Venting wire

With tubing cover.

10 pieces	Ø 0.8 mm	2152
	Ø 1.0 mm	2153
	Ø 1.2 mm	2155
	Ø 1.5 mm	2154



Receiver coupling

Made of plastic.

5 pieces	208
----------	-----



Mold ring holder

To fix mold rings resp. connecting clamps directly in the still soft Biopor® AB material.

1 piece	219
---------	-----



Metal mold ring

For hard earmolds.

10 pieces, gilded	22010
100 pieces, gilded	220100



Mold ring with retentions

For Biopor® AB earmolds

10 pieces	22210
-----------	-------

Ventilette Passat Type 15

For bending of tubes. With beaker and point heating nozzle.

Ventilette Passat Type 15	868
---------------------------	-----



Technical data

Device	Voltage	Power consumption	Temperature range	Functional display	Dimensions (H x W x D)
Ventilette Passat Typ 15	240 V	250 watts	max. 180 °C / max. 250 °C with mounted nozzle	LED in the switch	250 x 100 x 160 mm

Extras & Accessories Laboratory Equipment & Devices



Cerumen protection inserts

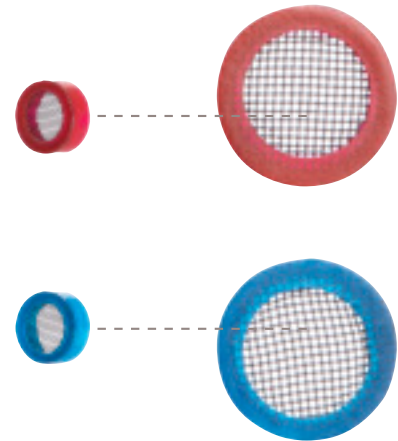
For cerumen protection HF 3 or HF 4.

HF 3 black

red	20 dispensers à 16 filters incl. changing tool	931299
	100 pieces	73523
blue	20 dispensers à 16 filters incl. changing tool	931298
	100 pieces	73527
red/blue	10 dispensers red, 10 dispensers blue à 16 filters incl. changing tool	931302

HF 4 black

red	20 dispensers à 16 filters incl. changing tool	931301
	100 pieces	73540
blue	20 dispensers à 16 filters incl. changing tool	931300
	100 pieces	73544
red/blue	10 dispensers red, 10 dispensers blue à 16 filters incl. changing tool	931295



Cerumen protection capsules

For cerumen protection HF 3, system diameter 3.5 mm or HF 4, system diameter 2.9 mm.

2.0 mm drilling, beige

HF 3	10 pieces	60415
	100 pieces	60416
HF 4	10 pieces	97141
	100 pieces	97142



1.4 mm drilling, beige

HF 3	10 pieces	41835
	100 pieces	41840
HF 4	10 pieces	97144
	100 pieces	97145



Tool

For exchanging the cerumen protection inserts HF 3, system diameter 3.5 mm or HF 4, system diameter 2.9 mm.

HF3	1 piece	024
HF4	1 piece	0241



Extras & Accessories Laboratory Equipment & Devices

Glusil

Adhesive primer.

20 ml	076
-------	-----



PVC glue

Glue for joining PVC parts.

20 ml	brush included	306
-------	----------------	-----



Superglue

10 g, thin fluid	077
20 g, viscous	078



Rotary cap

For precise dosing.

Outlet: 2 mm	0774
--------------	------



Dosing tip

For superglue.

Ø 0.5 mm, 20 mm	0776
Ø 1.0 mm, 45 mm	0775



Primer for superglue

15 ml	0771
-------	------



SK 87 Silicone glue

18 ml (20 g)	087
--------------	-----



Extras & Accessories Laboratory Equipment & Devices

Stetoclip

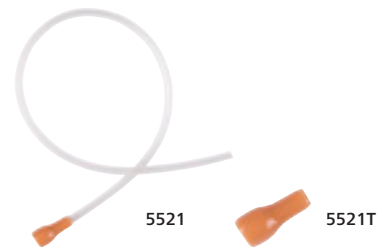
Stetoclip with coupling	552
Stetoclip with ITE-adapter and interception tube	553



ITE adapter

With tubing for stetoclip.

1 piece	5521
---------	------



Spare ITE adapter

Spare part without tubing

1 piece	5521T
---------	-------

PVC plugs

For universal earmolds for BTE hearing systems.

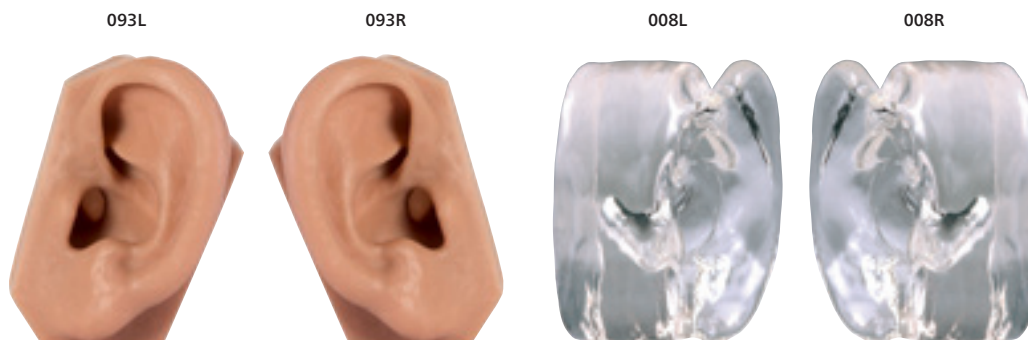
small	2571
medium	2572
large	2573



Demo ears

Mockup made of skin-colored or clear transparent flexible silicone. Ideal for demonstration purposes.

Demo ear	skin colored left	093L
	skin colored right	093R
	clear left	008L
	clear right	008R



Extras & Accessories Laboratory Equipment & Devices

Soldering station ERSA RDS 80

Power soldering station with microprocessor regulation. The unit is controlled by a processor and offers in addition to a direct selection of 3 programmable temperatures other useful features like standby and auto-power-off function as well as a big and comfortable to read LC display. The powerful PTC heating element of the solder piston RT 80 (up to 290 W heating power) guarantees a quick reaching of the temperature set with corresponding power reserve.

- Soldering tip type: permanent soldering tip
- Soldering tip width: 0.4 mm

Soldering station ERSA RDS 80	1810
-------------------------------	------



Technical data

Device	Voltage	Secondary voltage	Power	Temperature	Heating time
Soldering station ERSA RDS 80	230 V	24 V	800 watts	150–450 °C (302–842 °F)	40 sec.

Soldering wire

Ø 0.5 mm

100 g	182
-------	-----

Soldering ex

- Length: 1.6 m
- Width: 2.5 mm

1 piece	183
---------	-----



Luxo LED magnifying lamp

The light can be dimmed in 3 stages and has a timer function that allows it to switch off automatically after either 4 or 9 hours

- 127 mm glass lens 3.0 dpt, white

Luxo LED magnifying lamp	695
--------------------------	-----

Slotted screwdriver set

6 pieces, measurements: 1.0 / 1.4 / 2.0 / 2.4 / 3.0 / 3.8 mm

1 set	184
-------	-----



Extras & Accessories Laboratory Equipment & Devices

Work base

- Dimensions: approx. 40 x 25 cm
- Thickness: 2–3 mm

1 piece	186
---------	-----



Protective goggles uvex i-5

Sporty premium safety glasses with many features. The ergonomically shaped frame with multi-stage adjustment allow a high degree of customization to ensure a good fit for all head and face shapes.

- DIN EN 166 + DIN EN 170

1 piece	3791
---------	------



Mouth and nose protection

Protects from dust, for single use.

50 pieces	383
-----------	-----



Half mask with exhalation filter

Tested and approved according to EN 149:2001+A1:2009. The mask meets the requirements of the additional dolomite dust test.

20 pieces	1938
-----------	------



Nitrile disposable gloves

100 pieces, blue	S (7)	1399S
	M (8)	1399M
	L (9)	1399L
	XL (10)	1399XL



KCL Dermatril P 743 gloves

Chemically and mechanically resistant disposable protective glove with a layer thickness of 0.2 mm. Complies with the requirements of EN 374.

50 pieces	S (7)	1406
	M (8)	14068
	L (9)	14069
	XL (10)	140610



Extras & Accessories Laboratory Equipment & Devices

KaVo SMARTair mobile evo

Offers perfect protection against fine dust. Dimensions: H 43 x W 42 x D 27 mm

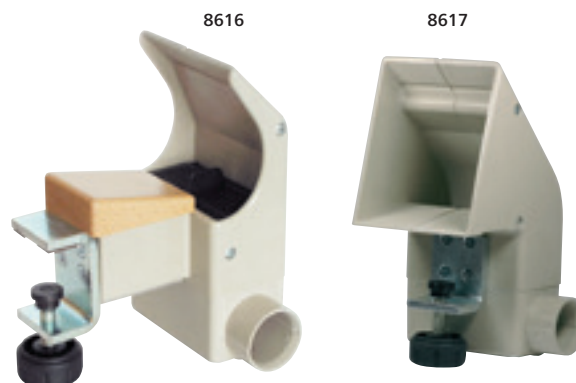
KaVo SMARTair mobile evo	86361
--------------------------	-------

- ⊕ Automatic suction power adjustment
- ⊕ 3-filter System: combined use of filter bag, micro-filter and carbon filter possible
- ⊕ Super-silent
- ⊕ BGIA-certification application category C according to BGIA: Applicable for the separation of dust with MAK values and carcinogenic substances (§35 Ordinance on Hazardous Substances)
- ⊕ Including 2 filter bags, suction tube and a micro-filter



Suction piece

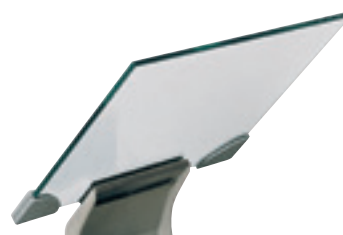
Front table	8616
Table top	8617



Protective pane and holder

Dimensions: approx. 22 x 22 cm

1 set	8618
-------	------



Filter bag

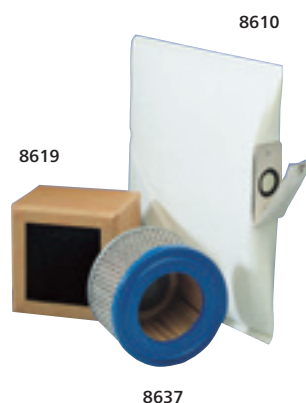
5 pieces	8610
----------	------

Adsorption filter

1 piece	8619
---------	------

Micro filter

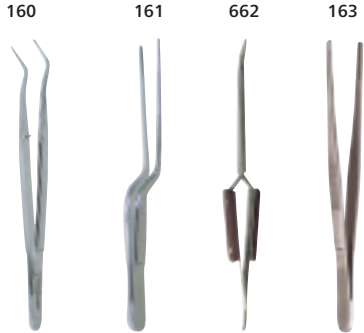
1 piece	8637
---------	------



Extras & Accessories Laboratory Equipment & Devices

Tweezers

Curved	160
Bayonet shape	161
Clamp tweezers	662
Straight tweezers	163



Side cutter

1 piece	185
---------	-----



Scalpel holder

With pointed shape.

1 piece	676
---------	-----



Blades for scalpel holder

12 pieces	6754
-----------	------



Tubing expander

1 piece	664
---------	-----



Scissors

1 piece	392
---------	-----



Tubing loop

1 piece	118
---------	-----

Extras & Accessories Laboratory Equipment & Devices

Milling cutter

Practical set with motor handpiece, equipped with 24 different rotating tools as well as one power supply unit.

- High exactitude of cyclic running
- Quick exchange of tools
- Light, slim motor handpiece
- Easy to use due to direct control in the motor handpiece
- Spiral cable of 150 cm provides mobility
- Infinitely variable for speeds from 5,000 to 20,000 rpm.



Milling cutter	642
----------------	-----

Zubler VARIOstar T50

The low-cost all-rounder for the modern laboratory. The T 50 benchtop unit features new brushless drive technology.

- Counterclockwise/clockwise rotation up to 50,000 rpm.
- 100 % compatible with any extraction system
- Fatigue-free work, handpiece fits ergonomically in the hand
- Collet chuck: Ø 2.35 mm



Zubler VARIOstar T50	6603
----------------------	------

Technical data

Device	Voltage	Secondary voltage / Secondary current	Power consumption	Performance	High speed voltage
Milling cutter	220–240 V / 50 Hz	12 V / 1.0 A	—	12 VA	—
Zubler VARIOstar T50	230 V / 50–60 Hz	—	270 watts	—	1000–50000 rpm

Small grinding motor

With vertical faceplate, especially for grinding hollow ITE shells.

- Power consumption: 140 watts

230 V / 50 Hz	8125
115 V / 50 Hz	8125A



Grinding wheel sheets

- Grain: 240

5 pieces + 1 storage sheet	8126
----------------------------	------



Extras & Accessories Laboratory Equipment & Devices

KaVo laboratory drives

The high-quality KaVo laboratory drives operate extremely quiet and run smoothly. The pleasant and easy handling ensures a relaxed operation and concentrated work.

- Collets for shaft: 2.35 mm (on request: 3.0 mm; 3.175 mm)
- Radial run-out: < 0.02 mm
- Tool exchange: Twist-rapid tool fixture
- Fan: Closed system
- Drive system: DC-motor without commutator
- Cable length: 2 m
- Base: Single base
- Voltage: 110/120/230 V – 50/60 Hz

- ⊕ The single-shaft system allows for basic maintenance in the laboratory
- ⊕ Less wear parts due to single-shaft system
- ⊕ Ergonomic handpiece shape
- ⊕ The ball bearing of the handpiece can be quickly exchanged by laboratory technician
- ⊕ Low weight and small dimensions
- ⊕ Extra slim and light cable offers additional mobility

KaVo K Power Grip tool holder

with foot control model	6441
with table top model and foot switch	6442

KaVo K5plus tool holder

with foot control model	6421
with table top model and foot switch	6422



Technical data

Device	Speed range	Torque	Weight / with connecting cable	Length
KaVo K Power Grip tool holder	1,000–50,000 min ⁻¹ / max	max. 7.0 Ncm	approx. 250 g / approx. 355 g	165 mm
KaVo K5plus tool holder	1,000–35,000 min ⁻¹ / max	max. 4.5 Ncm	approx. 216 g / approx. 319 g	149 mm

Extras & Accessories Rotary Instruments

Instructions for use and safety recommendations for rotary instruments

Application

- Make sure that only technically perfect tool holders are used.
- Chuck the instruments as deeply as possible.
- The instrument must be rotating before attaching to the object. Please also pay attention to the concentricity of the instrument.
- Tilting or levering the instruments leads to increased risk of breakage and should therefore be avoided at all costs.
- Please observe the speed recommendations. Failure to observe the maximum permissible speeds leads to an increased security risk.
- Please wear protective goggles as a basic principle.
- Improper use leads to an increased risk and inferior results. Therefore only use the instruments for the intended purpose.
- Improper use may result in bad work results.
- Bent or not round running instruments as well as instruments which are damaged or fully worn must be eliminated immediately.
- Excessive contact forces must be avoided.
- Put down used instruments but do not throw them off.

Recommended speeds

Please consider the indicated recommended speeds!

- Observe the instrument-specific speed recommendations to achieve perfect results.
- When exceeding the maximum permissible speeds, long and pointed instruments are subject to resonant vibration in the tip area which may lead to the destruction of the instrument.
- In the case of instruments where the working part diameter is larger than the shank, severe centrifugal forces may occur when speed is too high. This can lead to bending of the shank and/or breakage of the instrument. For this reason, the maximum permissible speed must not be exceeded.
- The maximum permissible and optimum speeds are indicated below the respective article description. In general, the larger the working part, the lower the speed!

Contact forces

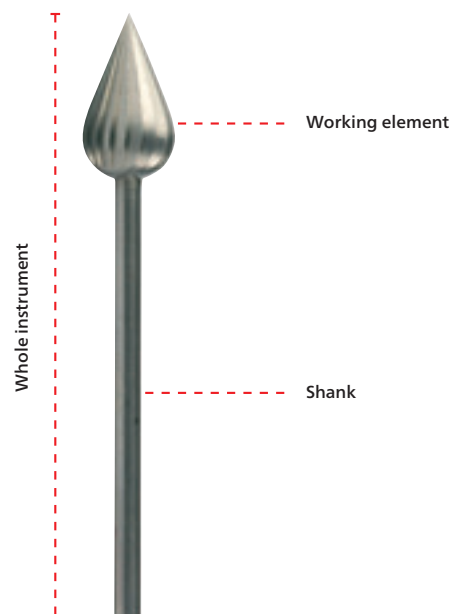
- Excessive contact forces can damage the working part of the instrument with cutting edge chipping in cutting instruments. At the same time, high heat occurs.
- Increased contact pressure may lead to stripping of the grit on abrasive instruments or to clogging of the instruments and increased heat generation.

Polishers and brushes

- Apply low contact pressure in order to minimize heat generation.
- Apply a speed of 5,000–6,000 rpm only in order to increase service life.
- Polishing should always be carried out in circular motions.
- The usage of protective goggles as well as a suction device is recommended.

Personal protective equipment

- If persons are allergic against swarf frequent, longer, intensive skin contact should be avoided; if necessary personal protective equipment should be worn.
- Care and clean your skin always.
- Do not eat, drink, smoke or sniff while working.
- Breathing protection: To reduce swarf use a suction device.
- Hand protection: Use protective gloves made of plastic or synthetic vulcanized rubber in case you have intensive skin contact and if safety instructions allow. Otherwise use special skin protection creams.
- Eye protection: Tight-fitting protective goggle.
- Skin protection: Clean and care your skin after work.



Extras & Accessories Rotary Instruments

Drills and cutters for hard materials

Ball burr

1 piece	Ø 1.2 mm	max. rotation speed: min ⁻¹ 40,000	900
	Ø 1.6 mm	max. rotation speed: min ⁻¹ 40,000	901
	Ø 1.8 mm	max. rotation speed: min ⁻¹ 40,000	902
	Ø 2.1 mm	max. rotation speed: min ⁻¹ 40,000	903
	Ø 2.7 mm	max. rotation speed: min ⁻¹ 30,000	904
	Ø 3.1 mm	max. rotation speed: min ⁻¹ 25,000	905
5 pieces	Ø 3.5 mm	max. rotation speed: min ⁻¹ 25,000	906



Oval cutter

Ø 5.0 mm	max. rotation speed: min ⁻¹ 30,000	911
Ø 8.0 mm	max. rotation speed: min ⁻¹ 30,000	912



Cutters

Globular-shaped

Ø 8.0 mm	max. rotation speed: min ⁻¹ 20,000	913
----------	---	-----

Conically-shaped

Ø 4.0 mm	max. rotation speed: min ⁻¹ 30,000	914
Ø 4.5 mm	lank, max. rotation speed: min ⁻¹ 30,000	915
Ø 5.0 mm	max. rotation speed: min ⁻¹ 30,000	916

Pear-shaped

Ø 5.0 mm	max. rotation speed: min ⁻¹ 30,000	917
----------	---	-----

Pointed cone-shaped

Ø 6.0 mm	max. rotation speed: min ⁻¹ 20,000	918
Ø 8.0 mm	max. rotation speed: min ⁻¹ 20,000	919

Cylindric

Ø 6.0 mm	max. rotation speed: min ⁻¹ 20,000	920
----------	---	-----

Oval

Ø 7.0 mm	max. rotation speed: min ⁻¹ 20,000	921
----------	---	-----



Extras & Accessories Rotary Instruments

Drills and cutters for soft materials

Ball burr

Ø 1.6 mm	max. rotation speed: min ⁻¹ 40,000	941
Ø 2.1 mm	max. rotation speed: min ⁻¹ 40,000	942
Ø 2.3 mm	max. rotation speed: min ⁻¹ 40,000	943
Ø 3.1 mm	max. rotation speed: min ⁻¹ 30,000	944



Cutters

Globular-shaped

Ø 5.0 mm	fine, max. rotation speed: min ⁻¹ 20,000	9515
----------	---	------

Oval

Ø 5.0 mm	max. rotation speed: min ⁻¹ 30,000	952
Ø 7.0 mm	max. rotation speed: min ⁻¹ 30,000	953
Ø 8.0 mm	max. rotation speed: min ⁻¹ 30,000	954



Cylindric

Ø 4.0 mm	max. rotation speed: min ⁻¹ 40,000	955
Ø 5.0 mm	max. rotation speed: min ⁻¹ 30,000	956
Ø 7.0 mm	max. rotation speed: min ⁻¹ 20,000	957



Conically-shaped

Ø 6.0 mm	fine, max. rotation speed: min ⁻¹ 20,000	958
----------	---	-----

Grinding cap holder

Ø 4.95 mm	999
-----------	-----



Grinding caps

Per 5 pieces.

Ø 5.0 mm	Grain: 150, max. rotation speed: min ⁻¹ 15,000	9910
Ø 5.0 mm	Grain: 80, max. rotation speed: min ⁻¹ 15,000	9911



Swam stone

Mounted, pear-shaped.

Ø 6.0 mm	max. rotation speed: min ⁻¹ 12,000	9912
----------	---	------



Extras & Accessories Rotary Instruments

Speed Trimmer

For cutting resins.

max. rotation speed: min ⁻¹ 50,000	961
---	-----



Cutter

For cutting resins.

max. rotation speed: min ⁻¹ 50,000	972
---	-----



Sandpaper holder

max. rotation speed: min ⁻¹ 7,000	962
--	-----

Twist drill

Ø 0.6 mm	max. rotation speed: min ⁻¹ 30,000	966
Ø 0.8 mm	max. rotation speed: min ⁻¹ 30,000	967
Ø 1.0 mm	max. rotation speed: min ⁻¹ 30,000	968
Ø 1.2 mm	max. rotation speed: min ⁻¹ 30,000	969
Ø 1.4 mm	max. rotation speed: min ⁻¹ 30,000	970
Ø 1.6 mm	max. rotation speed: min ⁻¹ 30,000	971
Ø 2.0 mm	max. rotation speed: min ⁻¹ 30,000	97420
Ø 2.5 mm	max. rotation speed: min ⁻¹ 30,000	97425
Ø 2.9 mm	max. rotation speed: min ⁻¹ 30,000	97429



Drill short

Ø 2.35 mm	max. rotation speed: min ⁻¹ 30,000	973
-----------	---	-----



Drill large

Ø 2.85 mm	max. rotation speed: min ⁻¹ 30,000	974
-----------	---	-----

Hard metal cutter

for reception of mold rings.

Ø 6.0 mm	max. rotation speed: min ⁻¹ 35,000	981
----------	---	-----



Rubber polisher

Ø 12.5 mm	max. rotation speed: min ⁻¹ 10,000, grey	994
Ø 5.0 mm	max. rotation speed: min ⁻¹ 20,000, green	995
Ø 10.0 mm	max. rotation speed: min ⁻¹ 10,000, grey	9971
Ø 6.0 mm	max. rotation speed: min ⁻¹ 20,000, grey	997



Grinding stone

Ø 5.0 mm	max. rotation speed: min ⁻¹ 40,000, grey green	998
----------	---	-----

Extras & Accessories Rotary Instruments

Wheel brush

max. rotation speed: min⁻¹ 10,000–15,000 988



Polishing buff

max. rotation speed: min⁻¹ 10,000 989

Finishing stone for resins

max. rotation speed: min⁻¹ 15,000, blue 991



Mandrell

Ø 5.0 mm max. rotation speed: min⁻¹ 15,000 987

Soft grinding wheel with mandrel

1 piece max. rotation speed: min⁻¹ 10,000 992



Soft grinding wheel replacements

10 pieces 993

Soft grinding wheel resistant with mandrel

1 piece max. rotation speed: min⁻¹ 10,000 932



Soft grinding wheel resistant

Replacements.

10 piece 933

Magnetic burr holder

1 piece 732



Drill stand with cover

Without content.

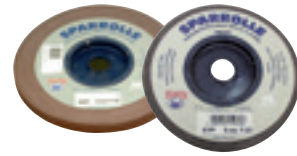
1 piece 730



Extras & Accessories Injectors & Mixing tips

Corundum

50 m	Grain: 120 (coarse)	3431
50 m	Grain: 220 (fine)	3432



Sandpaper

50 m	Grain: 120 (coarse)	3441
50 m	Grain: 220 (fine)	3442



Manual Injectors

The manual Injectors enable a clean and safe application of impression materials with stable pressure. Less effort is necessary for dispensing the material.

Injector DS 50 for 50 ml double cartridges	1502
Injector for 48 ml and 50 ml double cartridges	15022



Spacer

To reduce the grip distance, for easier dispensing of impression material. For Injector and Injector DS 50.

1 piece	1507
---------	------



Extras & Accessories Injectors & Mixing tips

Injector control A

The Injector control A is very comfortable and increases movability during impression taking. For all Otoform® ear impression materials.

- Automatic dosage and mixing of impression material
- Reduces shaking and moving thanks to the electromotive drive
- Even and adjustable pressure on the ear tissue, thus a fitting of the earmold resp. ITE system is controlled in a better way
- Continuously variable speed (0.35–3.5 r/min)
- Quick exchange of cartridges
- For all 48 ml and S 50 double cartridges
- Integrated overload protection

220–230 V / 50–60 Hz	15151
115 V / 60 Hz, US plug	15151A

Table rack

for Injector control A.

1 piece	1512
---------	------



Technical data

Device	Power supply	Weight	Dimensions (HxWxD)
Injector control A	DC-motor: 4 watts / 12 Volt	~600 g with integrated rechargeable battery	200x220x65 mm

Injector pneumatic

Offers a clean and safe as well as simple application of Biopor® AB materials. For 50 ml double cartridges. Compressed air supply is necessary.

- Weight: 730 g
- Maximum operating pressure: 8 bar
- Compressive force: 1.3 kN

Injector pneumatic	1502P
--------------------	-------



Extras & Accessories Mixing tips

Canula tips



Recommended for bubble-free injection into areas of negative molds which are difficult to reach. Especially useful in the Biopor® AB technique.

Not suitable for use with Biopor® AB Xtreme and Biopor® AB 60 Shore A.

50 pieces

323

Mixing tip



Ø 6.3 mm

- For 400 ml double cartridges

Biopor® AB

100 pieces

3214



The colors of the caps on the double cartridges indicate the mixing tips belonging to the product.

T-Mixing tips



Ø 4.2 mm

- For S 50 double cartridges

Biopor® AB RT Lack
Biopor® AB UV Lack
Otoform® A flex
Otoform® A soft
Otoform® A softX
Otoform® A softX with color indicator
Otoform® A softX *boost*
Otoform® Xpand

40 pieces

3246

100 pieces

3247



Ø 5.4 mm

- For S 50 double cartridges

Biopor® AB fluoreszent
Biopor® AB light
Dosper evo
Formasil 2K
Fotosil
Klarsil H
Otoform® A soft
Otoform® A softX
Otoform® A softX with color indicator
Otoform® A softX *boost*
Otoform® A flex
Otoform® Xpand

40 pieces

3244

100 pieces

3245



Ø 6.5 mm

- For S 50 double cartridges

Biopor® AB
Otoform® Ak
Otopren

40 pieces

3241

100 pieces

3242

Index

A		
Adhesive wax	50	
Adsorption filter	62	
Anchor part connection	55	
Arc tubing connection	55	
B		
Ball burr	67–68	
Bandelin	12	
Beaker	12	
Biopor® AB	34–35	
Biopor® AB fluorescent	36	
Biopor® AB light	36	
Biopor® AB UV Lack / Biopor® AB RT Lack	39	
Biopor® Marker eco	40	
Biopor® UV-S	40	
Blades for scalpel holder	63	
Brass flask	53	
Brush	49	
Brush with magnet	9	
C		
Canula tips	73	
Cerumen protection capsules	57	
Cerumen protection inserts	57	
Cleaning brush	9	
Cleaning liquid	47	
Conical brass holder with clamp	47	
Connecting tube Dosper evo	51	
Corundum	71	
Cover plates	47	
Cuff forms	51	
Cutters	67–69	
D		
DACS 2.0	32	
Demo ears	59	
Dermatril P 743 gloves	61	
Desol	40	
DiluSoft	40	
Diluting agent	40	
Dipping instrument metal	49	
Dispenser for disposable funnels	23	
Dosing spoons	21	
Dosing tip	58	
Dosper evo	50	
Drill large	69	
Drill short	69	
Drill stand with cover	70	
dry-cap uv 3.1®	10	
Dublimat Pro	53	
E		
Ear light tips for HEINE mini-c® ear light	22	
Electric wax knife (Set)	49	
F		
Filter bag	62	
Finishing stone for resins	70	
Flask basket for Labormat TH	48	
Flask holder	41	
Formasil 2K	52	
FotoCast®	27	
FotoCast® 2	27	
FotoClean	29	
Fotofix faceplate glue	47	
Fotogel	52	
Fotogel Concentrate	52	
Fotoplast® Color Concentrate	47	
Fotoplast® Gel	43	
Fotoplast® Lack 3	43	
Fotoplast® Lack M	31	
Fotoplast® S hard	42	
Fotoplast® S IO	42	
FotoScreen®	30	
Fotosil	52	
FotoTec® DLP.A	26	
FotoTec® DLP.flex	26	
FotoTec® Repair	31	
FotoTec® SL.A	27	
FotoTec® SL.E	27	
FotoWash	29	
Funnels for HEINE Otoscopes	23	
G		
Gelon	52	
Glusil	58	
Glysol	47	
Grinding cap holder	68	
Grinding caps	68	
Grinding stone	69	
Grinding wheel sheets	64	
H		
Half mask with exhalation filter	61	
Hard metal cutter	69	
Hardener paste	17	
HEINE mini 3000® LED Fiber Optic Otoscope	22	
HEINE mini 3000® Otoscope	22	
HEINE mini-e ear light (LED)	22	
HEINE mini-e ear light (LED) Replacement head	22	
I		
Impression lifter metal	49	
Impression pads	23	
Impression syringes	21	
Injector	19, 71	
Injector control A	20, 72	
Injector pneumatic	72	
Insert basket made of plastic	12	
Insert basket made of stainless steel	12	
Isolat	53	
ITE adapter	59	
J		
Jaw tweezers	23	
K		
KaVo K Power Grip tool holder	65	
KaVo K5plus tool holder	65	
KaVo laboratory drives	65	
KaVo SMARTair mobile evo	62	
Klarsil H	52	
L		
Labormat TH	48	
Lack B	39	
Lack B eco	38	
Lack B matt	38	
Large mixing spatula	21	
Lid made of stainless steel	12	
Lid with hole made of stainless steel	12	
M		
Magnetic burr holder	70	
Magnifying lamp	60	
Mandrell	70	
Material reservoirs Dosper evo	51	
Megalux soft-start	46	
Metal expanding coupling	55	
Metal mold ring	58	
Micro filter	62	
Milling cutter	64	
Mixing pad	21	
Mixing tip	73	
Mixing tray	21	
Mixing spatula	21	
Modelling wax	50	
Mold ring holder	56	
Mold ring with retentions	56	
Mouth and nose protection	61	
N		
NanoScreen™	31	
NanoScreen™ Soft Lack	38	
Nitril disposable gloves	61	
O		
Otoform® Creme	9	
Otoform® Protect	18	
Otoform® Protect with swim box	18	
Otoform® A flex	15	
Otoform® A soft	15	
Otoform® A softX	14	
Otoform® A softX boost	14	
Otoform® Ak	15, 16	
Otoform® Ak X	16	
Otoform® Kc	17	
Otoform® Singles	16	
Otoform® Xpand	14	
Otopren	18	
OtoVita® Air Blower	9	
OtoVita® Care Case	9	
OtoVita® Care Set BTE	6	
OtoVita® Care Set ITE	7	
OtoVita® Cleaning Bowl	8	

OtoVita® Cleaning Spray	8	Soldering ex	60
OtoVita® Cleaning Tablets	8	Soldering station ERSA RDS 80	60
OtoVita® Cleaning Tissues	8	Soldering wire	60
OtoVita® dry uv 2.1	10	Sonolux Flash Evo	29
OtoVita® Drying Pellets	9	Spacer for the Injector	19, 71
OtoVita® Drying Tub	8	Spare bulbs	22
OtoVita® Mini Care Set	6	Speed Trimmer	69
OtoVita® Professional	11	Stainless steel turning motor	45
Disinfection Concentrate		Stetoclip	59
OtoVita® Professional	11	Suction piece	62
Disinfection Spray		Superglue	58
OtoVita® Professional Hand Gel	11	Swam stone	68
OtoVita® Tubing Floss	8		
Oval cutter	67	T	
		Table rack for	20, 72
P		Injector control A	
Paraffin dipping wax	49	Thermometer	49
PCU LED 24	44	Thermosoft	43
PCU LED N ₂	28	Thermosoft Lack	43
PCU vario	28	Tool	57
Polishing buff	70	Tubing	54
Polylux 100 Set	45	Tubing end piece	55
Polylux 500	46	Tubing expander	63
Polylux LED	44	Tubing loop	63
Polymax 1	41	Tweezers	63
Polymax 5	41	Twist drill	69
Pre-bent tubing	54	T-Mixing tips	73
Primer for superglue	58		
Protective goggles uvex i-5	61	U	
Protective pane and holder	62	Ultrasonic cleaning unit	12
PVC glue	58	UVA-light tubes	46
PVC plugs	59	u-sonic 3	10
R		V	
Rack Dosper evo	51	vac-clean UV 2	10
Rack for Labormat TH	48	VarioScreen®	30
Receiver coupling	56	Vented impression pads	23
Rotary cap	58	Ventilette Passat Type 15	56
Rubber polisher	69	Venting wire	56
S		W	
Sandpaper	71	Wax dipping unit	48
Sandpaper holder	69	Wax knife	49
Scalpel holder	63	Wax loop	9
Scissors	63	Wheel brush	70
Scissors with rounded ends	23	Wire cleaning brush	9
Separator	40	Work base	61
Side cutter	63		
Signing pencil	49	Z	
Silicone tubing	55	Zubler VARIOstar T50	64
SK 87 Silicone glue	58		
Slotted screwdriver set	60		
Small grinding motor	64		
Small nylon tubing	55		
Soft grinding wheel replacements	70		
Soft grinding wheel resistant	70		
Soft grinding wheel resistant	70		
with mandrel			
Soft grinding wheel with mandrel	70		
SoftTouch Lack	30		



Our medical devices are registered in many countries. Please contact us for further information.

We assume no liability for incorrect information in this catalogue and any consequences thereof. Delivery of our products is effected according to our general terms and conditions. Technical modifications reserved. Color variations are possible.



Dreve Otoplastik GmbH

Max-Planck-Straße 31 • 59423 Unna/Germany
Phone +49 2303 8807-0 • Fax +49 2303 82909
otoplastik@dreve.de • www.dreve.com

